

STAKING: INSTALL 6' METAL T-POST STAKES OUTSIDE PLANTING PIT IN UNDISTURBED MULCHED SOIL. USE #12 GAUGE GALVANIZED WIRE.

ALLOW FOR SOME TRUNK MOVEMENT

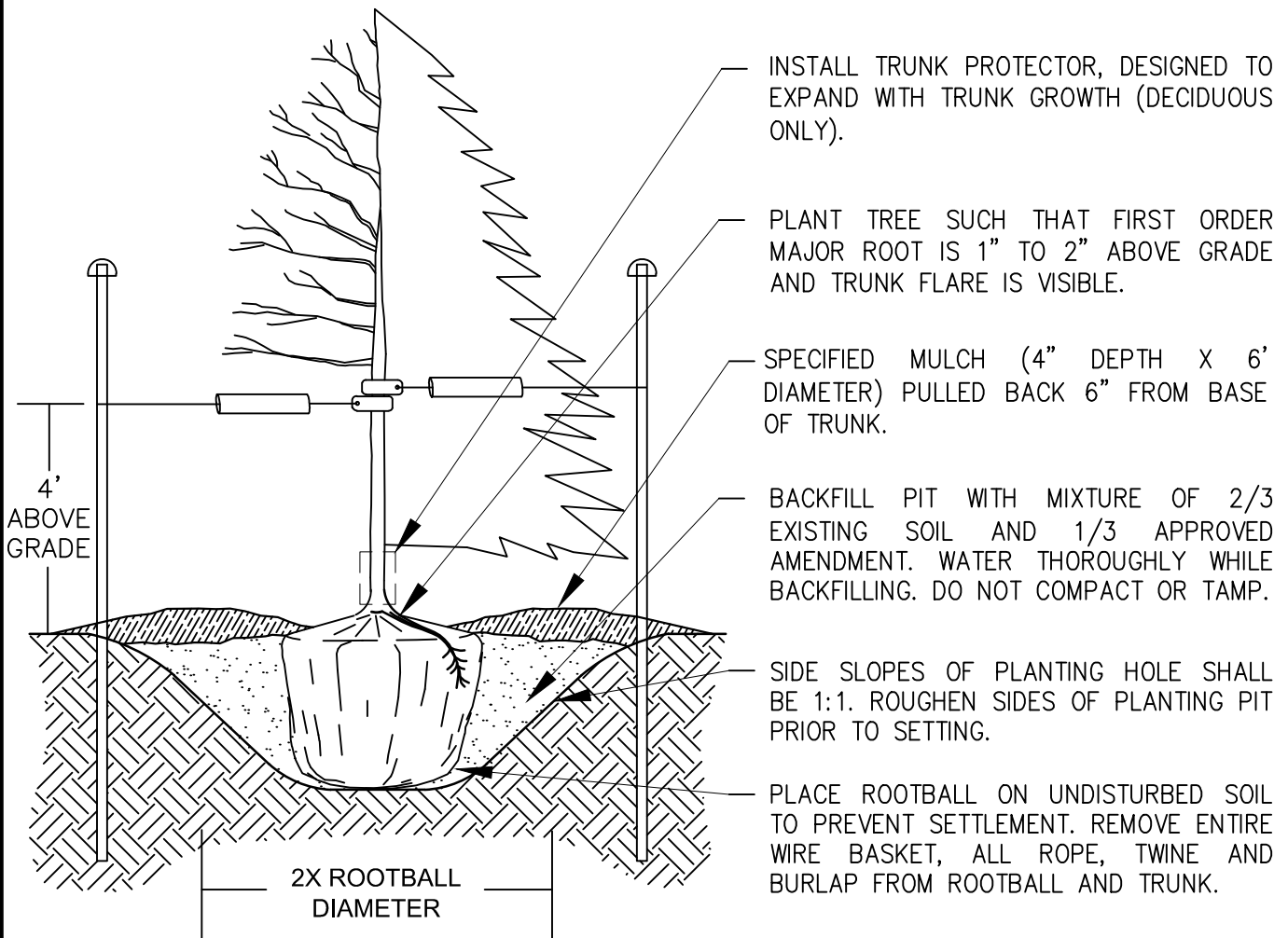
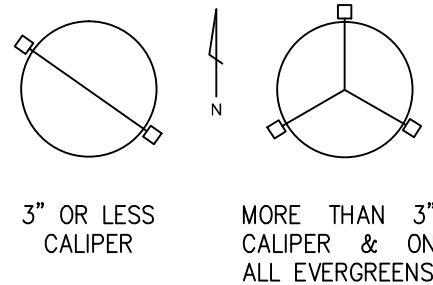
ATTACH TO 2" NYLON STRAPS THROUGH METAL GROMMETS, WITH 1/2" x 15" WHITE PVC SLEEVE ON EACH WIRE.

NYLON STRAPS SHALL BE LONG ENOUGH TO ACCOMMODATE 1-1/2" OF TRUNK GROWTH.

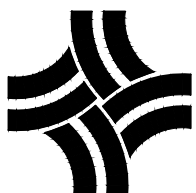
ADD PROTECTOR CAP TO TOP OF POST.

WRAP TREES TO FIRST BRANCH IF PLANTED IN THE FALL.
DO NOT WRAP IF PLANTED IN SPRING.

TREE STAKING PLAN VIEW



N.T.S.



CITY OF THORNTON, COLORADO
STANDARDS & SPECIFICATIONS

DECIDUOUS AND EVERGREEN TREE PLANTING DETAIL

ISSUED:
MARCH 1996

REVISED:
APRIL 2010

DRAWING NO.
800-1A

ARRODRIGAR: INSTALAR ESTACAS METÁLICAS EN FORMA DE T DE 6' FUERA DEL HOYO DE PLANTACIÓN EN TIERRA SIN DISTURBAR CUBIERTA DE MANTILLO. USE ALAMBRE GALVANIZADO DE ANCHO #12.

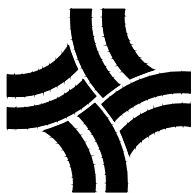
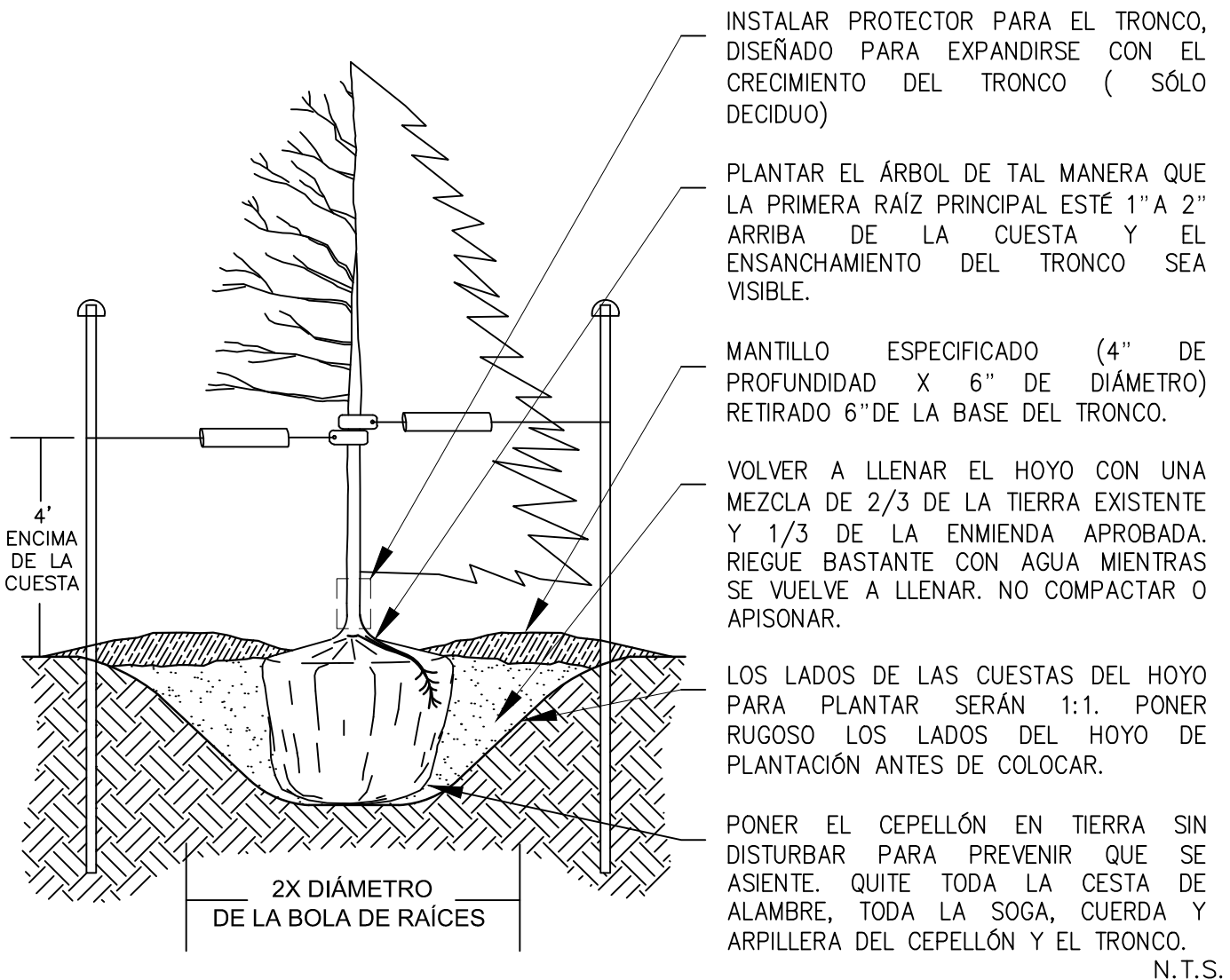
DEJE ESPACIO PARA QUE EL TRONCO SE PUEDA MOVER

PONER CORREAS DE NYLON DE 2" A TRAVÉS DE OJALES METÁLICOS, CON UNA MANGA DE PVC BLANCA DE 1/2" X 15" EN CADA ALAMBRE.

LAS CORREAS DE NYLON SERÁN LO SUFICIENTEMENTE LARGAS PARA PERMITIR QUE EL TRONCO CREZCA 1 - 1/2"

AGREGAR TAPA PROTECTORA A LA PARTE DE ARRIBA DE LA ESTACA.

ENVOLVER LOS ÁRBOLES HASTA LA PRIMERA RAMA SI SE PLANTA EN EL OTOÑO. NO ENVOLVER SI SE PLANTA EN LA PRIMAVERA.



CITY OF THORNTON, COLORADO
STANDARDS & SPECIFICATIONS

DECIDUOUS AND EVERGREEN TREE
PLANTING DETAIL

ISSUED:
MARCH 1996

REVISED:
APRIL 2010

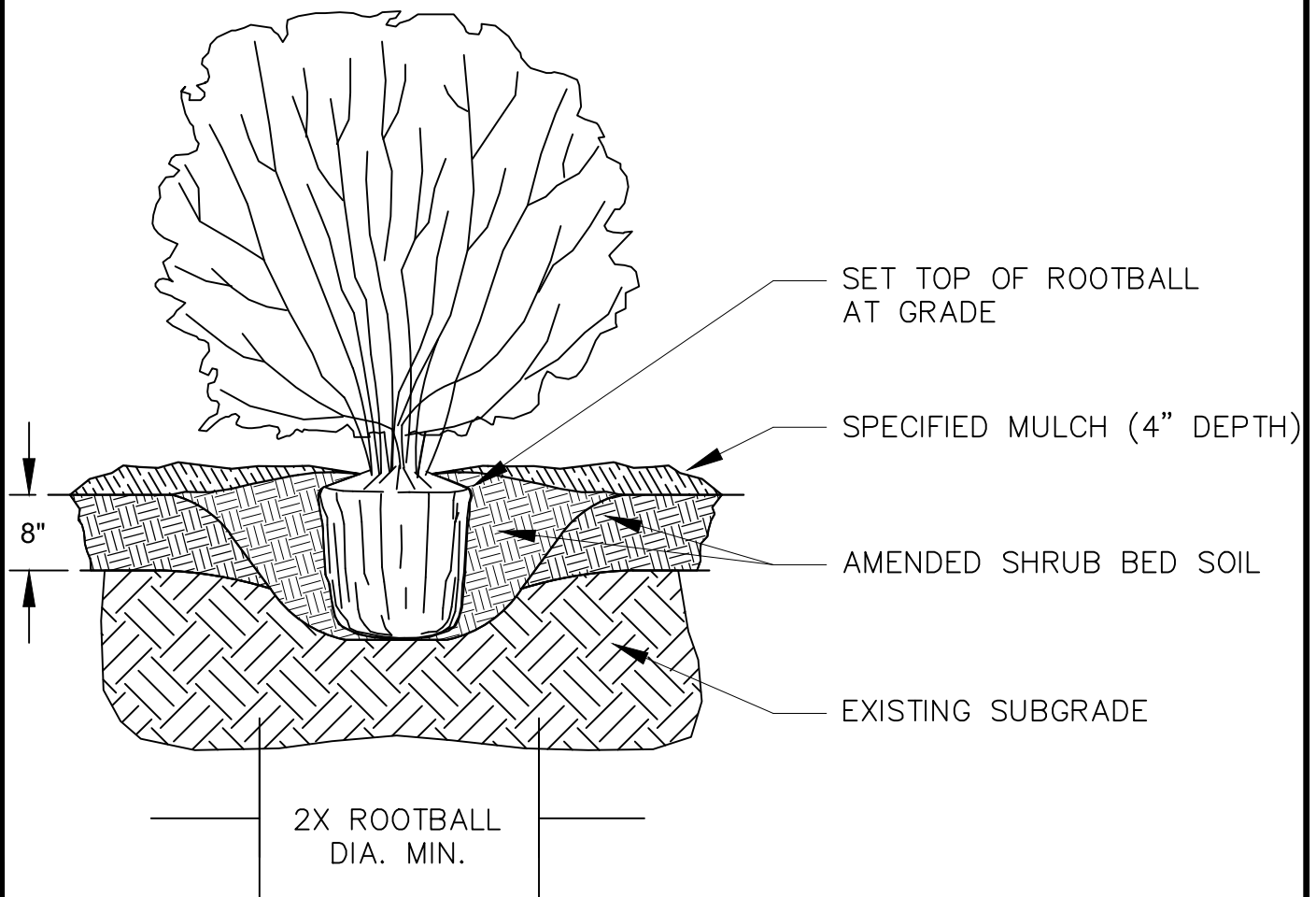
DRAWING NO.
800-1B

PLANT SHRUBS 1/2 MATURE WIDTH OR 4' FROM EDGE OF WALK, CURB OR EDGING.

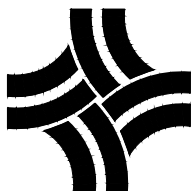
ENTIRE SHRUB BED AREA SHALL BE AMENDED WITH 4 CUBIC YARDS (6 CUBIC YARDS FOR CITY MAINTAINED PROJECTS) OF CLASS I OR CLASS II COMPOST PER 1000 S.F. TILLED TO DEPTH OF 8".

IF PLANT IS ROOT BOUND AND HAS CIRCLING ROOTS, SHEAR 1/2" OF THE ROOTMASS OFF OF ALL SIDES AND BOTTOM.

DO NOT PLANT SHRUBS HIGHER THAN SURROUNDING GRADE. BACKFILL SOIL SHOULD BE PULLED OVER TOP OF ROOTBALL (NO MORE THAN 1") TO PREVENT MOISTURE WICKING AND TO ALLOW ROOTS TO GROW INTO SURROUNDING SOIL.



N.T.S.

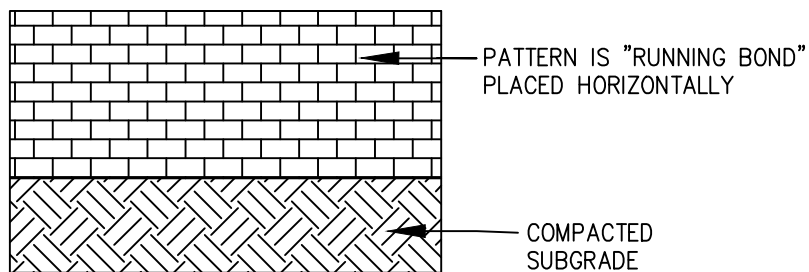
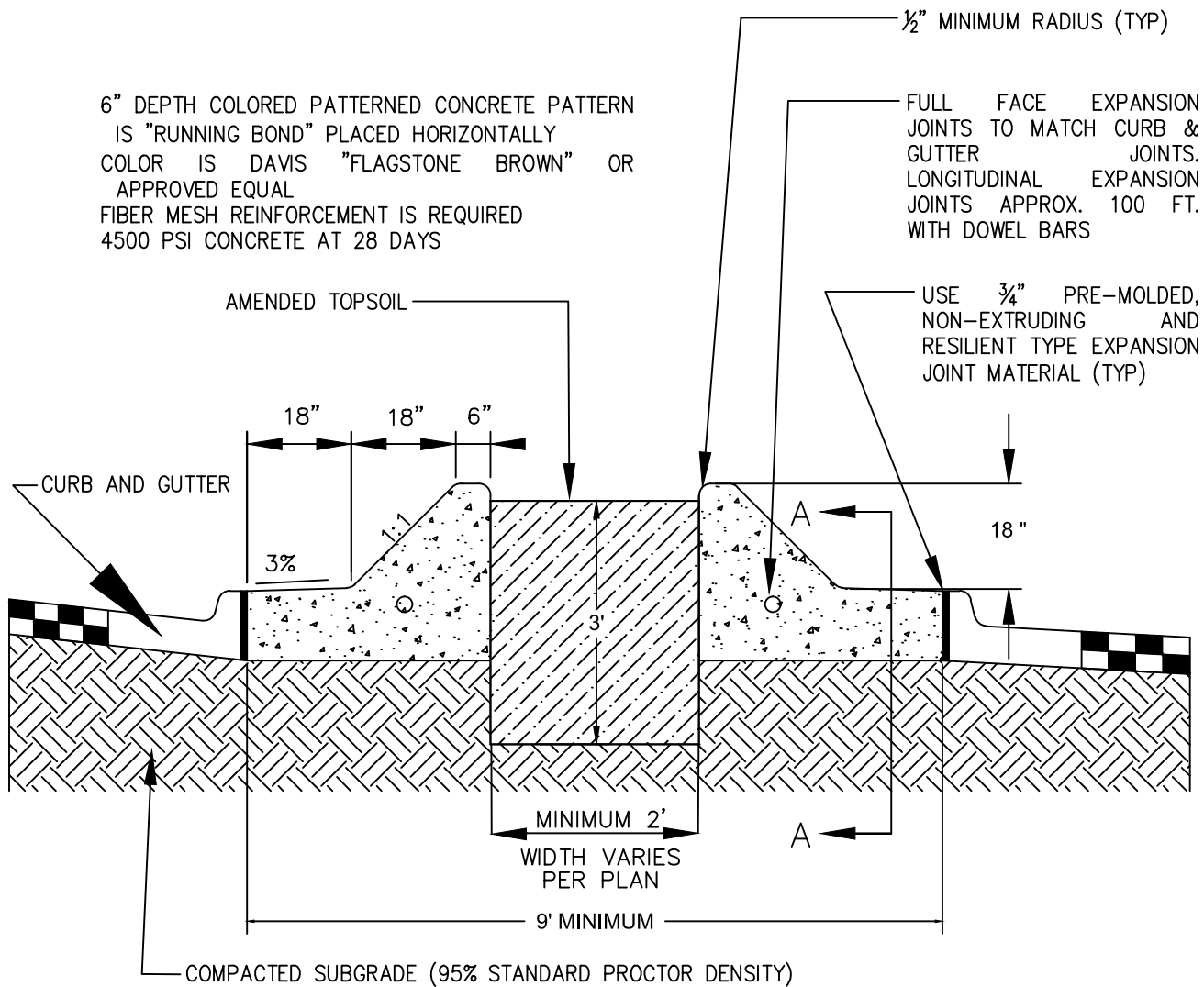


CITY OF THORNTON, COLORADO
STANDARDS & SPECIFICATIONS

SHRUB PLANTING DETAIL

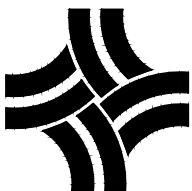
ISSUED:
MARCH 1996
REVISED:
APRIL 2010

DRAWING NO.
800-2



SECTION A-A

N.T.S.



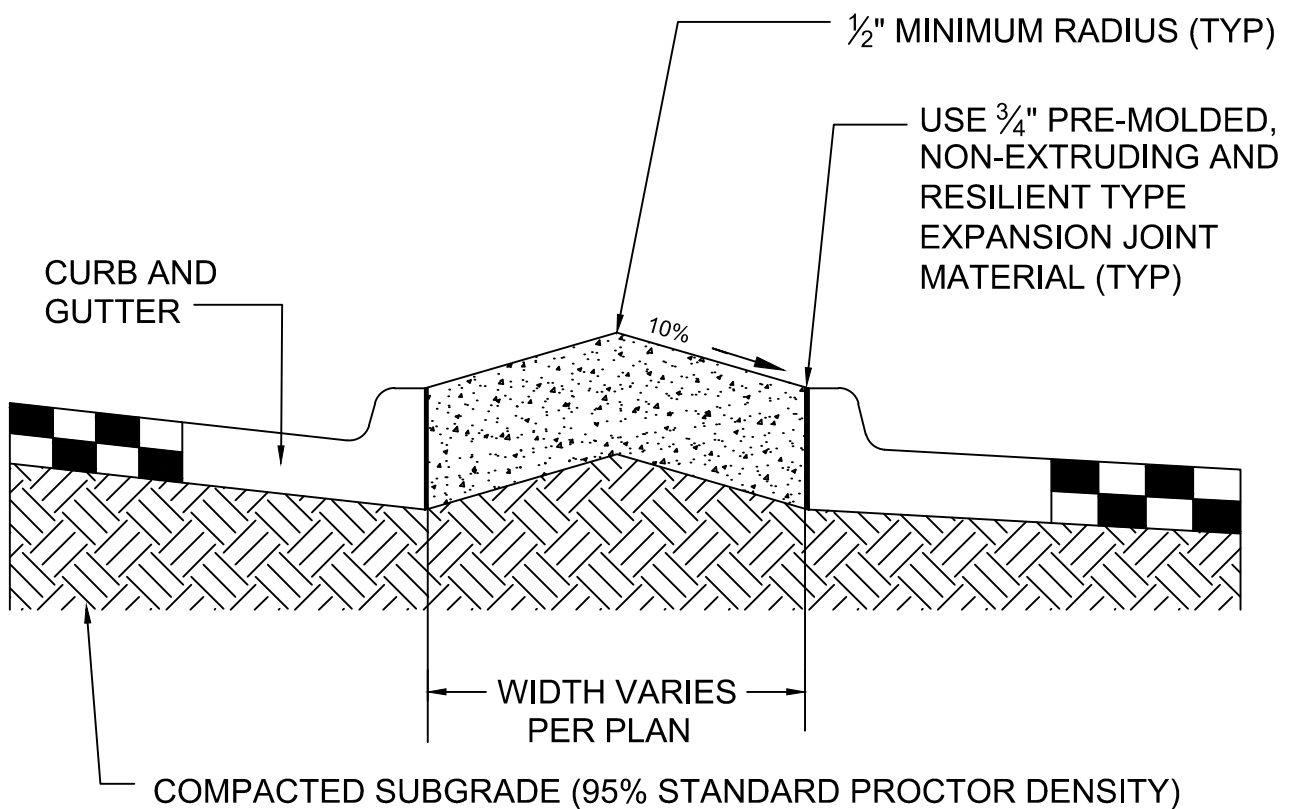
CITY OF THORNTON, COLORADO
 STANDARDS & SPECIFICATIONS

LANDSCAPED MEDIAN (ARTERIAL)

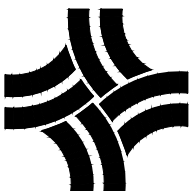
ISSUED:
 JUNE 2003
 REVISED:
 APRIL 2010

DRAWING NO.
 800-3

6" DEPTH COLORED PATTERNED CONCRETE PATTERN IS "RUNNING BOND" PLACED HORIZONTALLY COLOR IS DAVIS "FLAGSTONE BROWN" OR APPROVED EQUAL FIBER MESH REINFORCEMENT IS REQUIRED
4500 PSI CONCRETE AT 28 DAYS



N.T.S.



CITY OF THORNTON, COLORADO

STANDARDS & SPECIFICATIONS

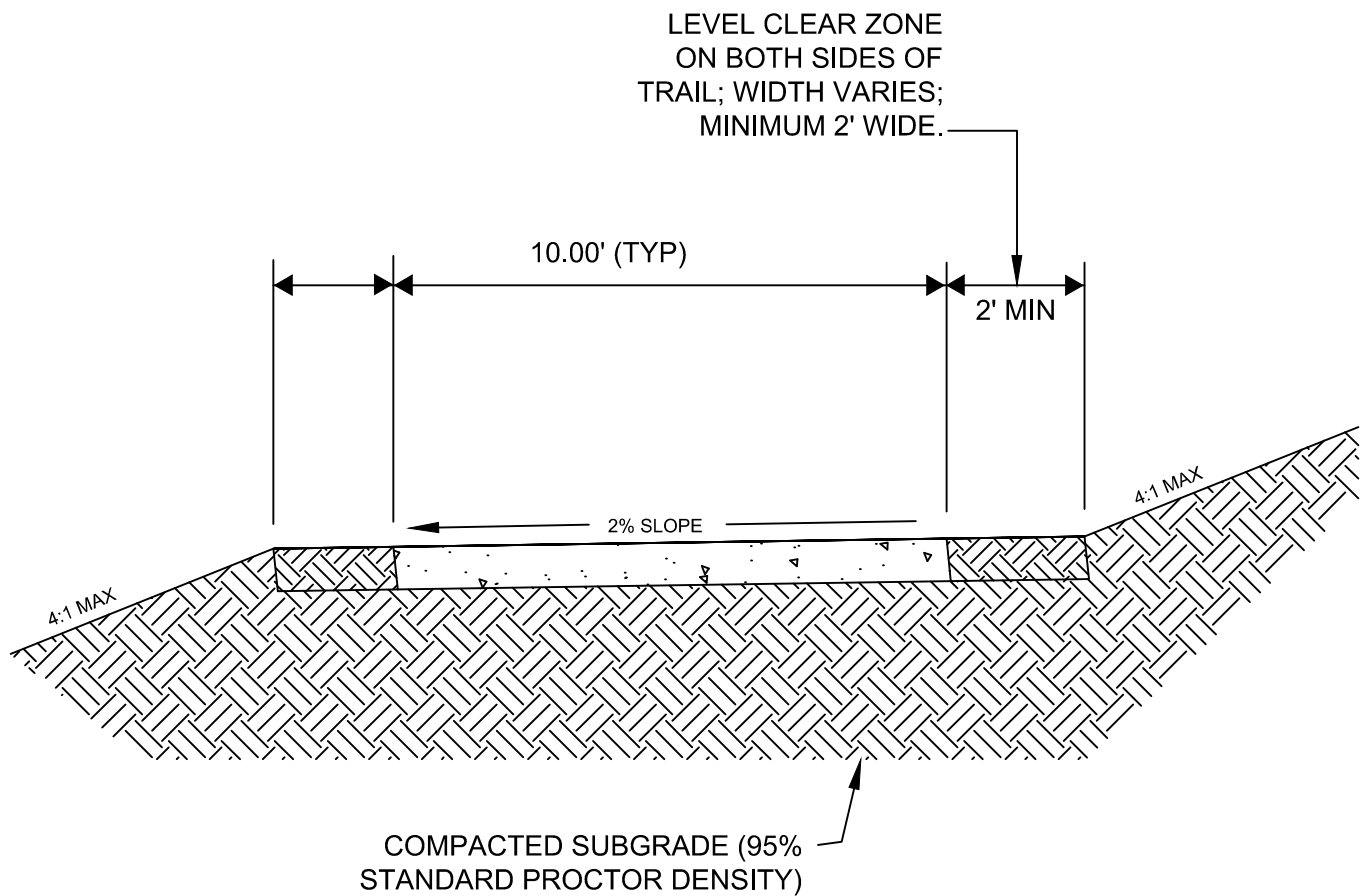
PAVED MEDIAN

ISSUED:
JUNE 2003

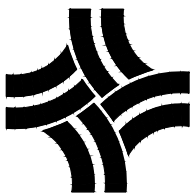
REVISED:
JAN 2012

DRAWING NO.
800-4

6" DEPTH
SAWCUT JOINTS EVERY 10' AND EXPANSION JOINTS EVERY 100'
FIBER MESH REINFORCEMENT IS REQUIRED
4500 PSI CONCRETE AT 28 DAYS



N.T.S.



CITY OF THORNTON, COLORADO
STANDARDS & SPECIFICATIONS

CONCRETE TRAIL TYPICAL
SECTION

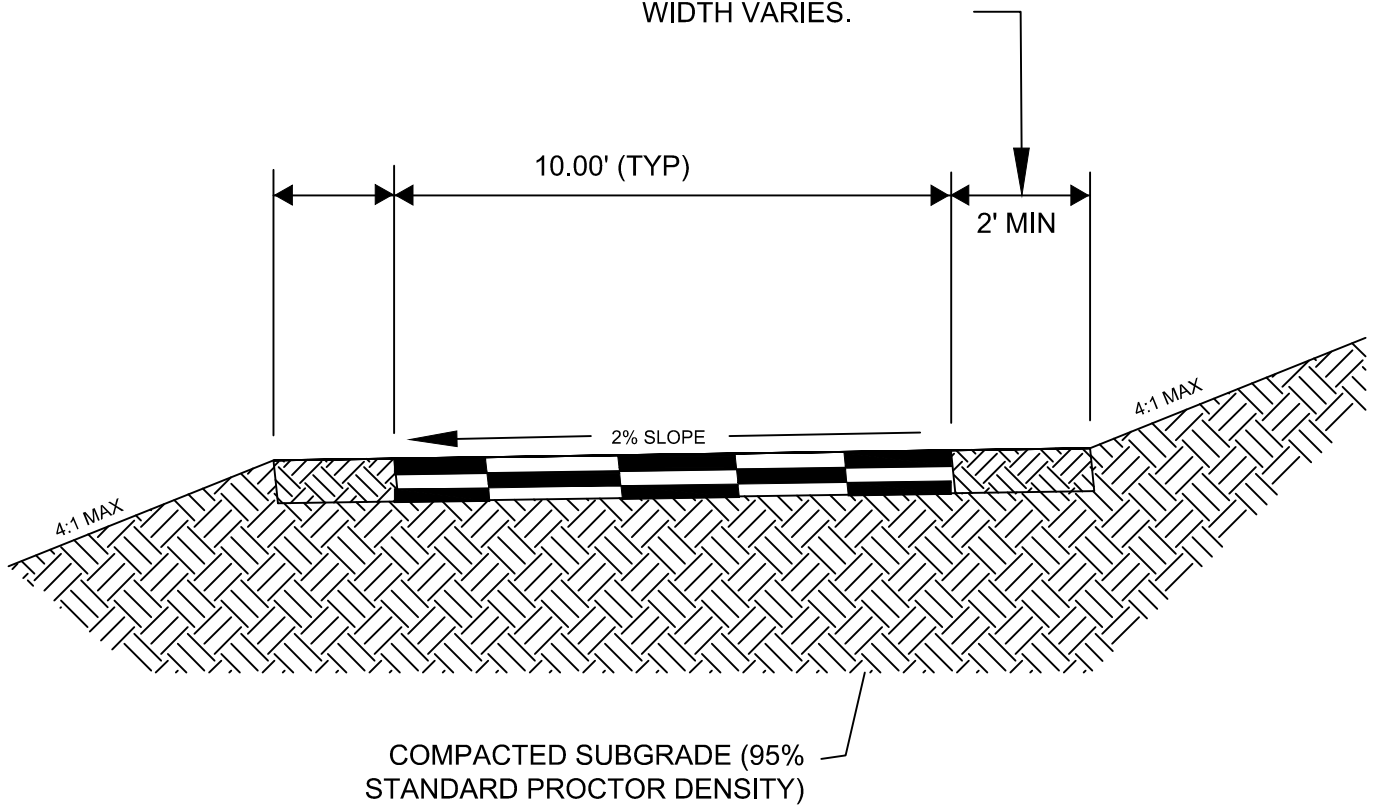
ISSUED:
JUNE 2003

REVISED:
APRIL 2010

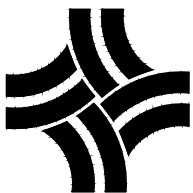
DRAWING NO.
800-5

6" DEPTH TRAIL
2" LIFTS W/FABRIC BETWEEN LIFTS
SX BASE
HIGH OIL CONTENT TOP LIFT

LEVEL CLEAR ZONE ON
BOTH SIDES OF TRAIL;
WIDTH VARIES.



N.T.S.



CITY OF THORNTON, COLORADO
STANDARDS & SPECIFICATIONS

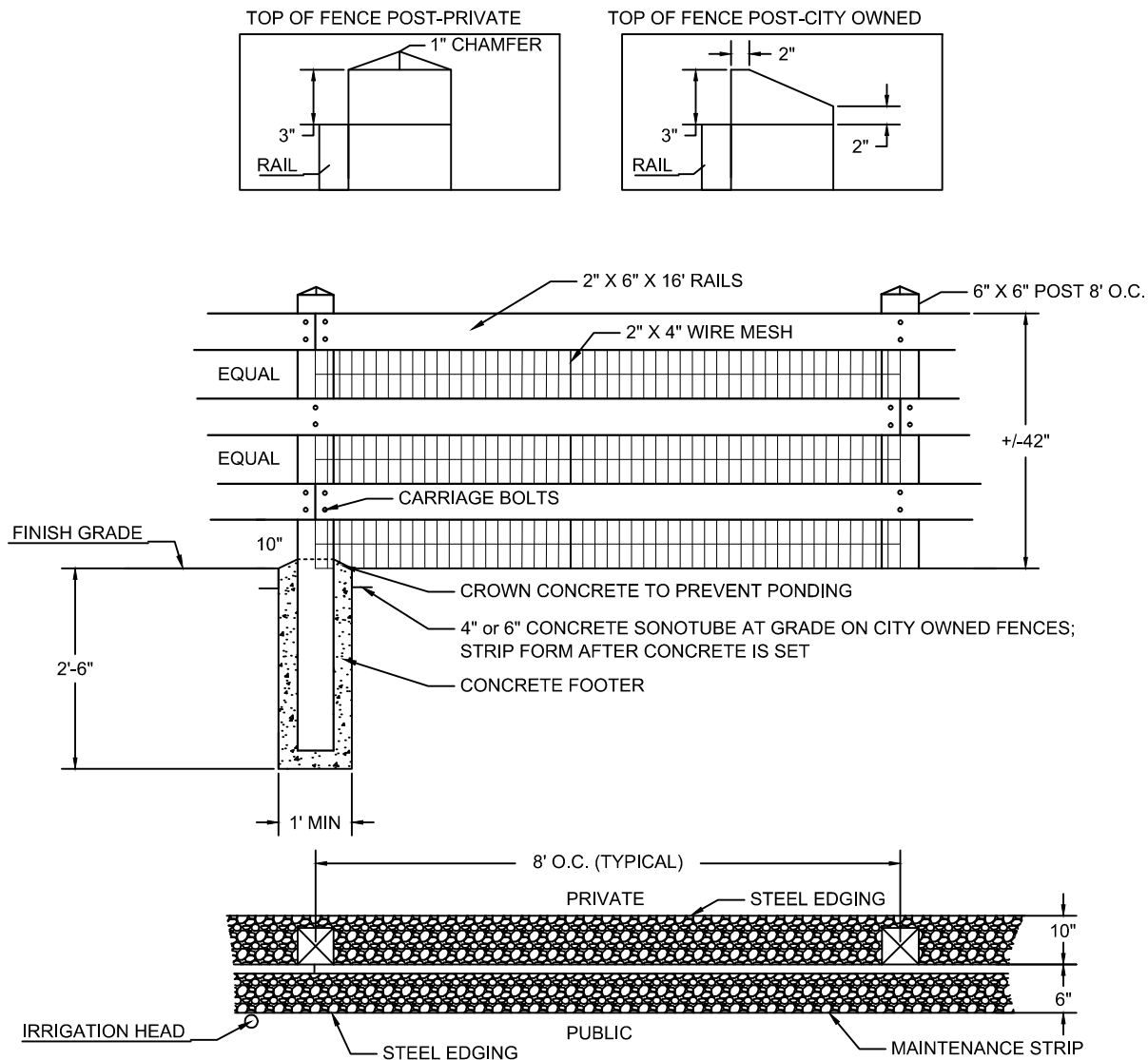
ASPHALT TRAIL TYPICAL SECTION

ISSUED:
JUNE 2003
REVISED:
APRIL 2010

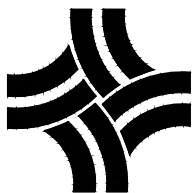
DRAWING NO.
800-6

MATERIALS

- POST AND RAILS: DIMENSIONAL CUT GRADE 1 CEDAR
- RAILS: 2" X 6" X 16'; ALTERNATE JOINTS (CHAMFER ENDS AT CORNER & ENDS).
- WELDED WIRE FABRIC (WHEN REQUIRED): 14 GAUGE 2" X 4"; SANDWICH FABRIC BETWEEN POST AND RAILS, ATTACH WITH FENCE STAPLES TO BACKSIDE OF FENCE EVERY 24 INCHES.
- CARRIAGE BOLTS: 1/2" X 6" GALVANIZED; COUNTERSINK NUTS; SHEER BOLTS EVEN WITH POST; FILE ENDS SMOOTH.
- MAINTENANCE STRIP: CRUSHER FINES OR UP TO 1-1/2" ROCK UNLESS OTHERWISE APPROVED TO A DEPTH OF 3 INCHES. LOCATE ALL IRRIGATION HEADS OUTSIDE OF MAINTENANCE STRIP.
- STAIN: CITY OWNED FENCES SHALL BE STAINED; APPLY TWO COATS OF APPROVED EXTERIOR, SEMI-TRANSPARENT OIL STAIN TO WOOD; DIAMOND VOGEL AG-SERIES GRAIN STAIN OR EQUAL.



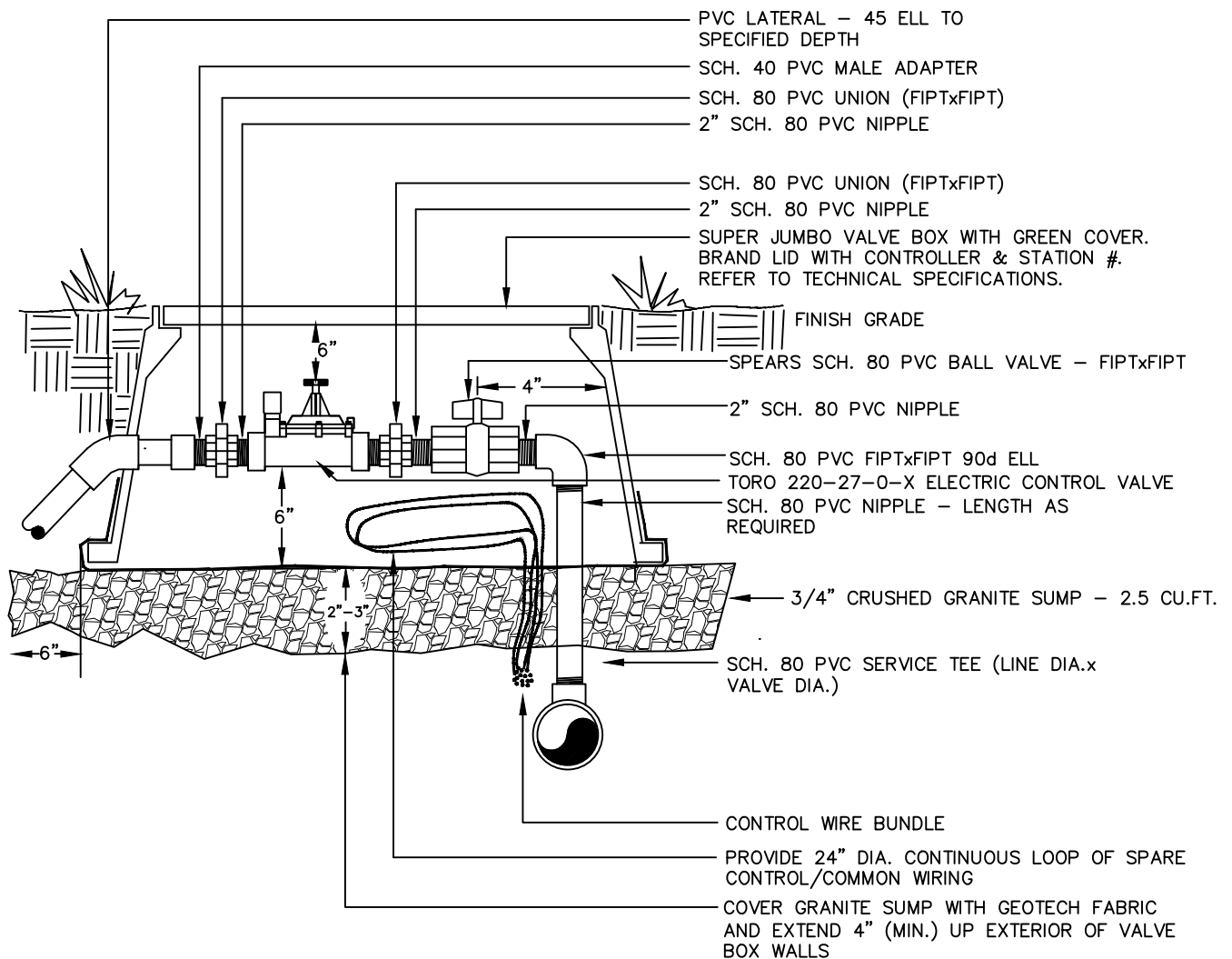
N.T.S.



CITY OF THORNTON, COLORADO
STANDARDS & SPECIFICATIONS

OPEN 3-RAIL FENCE WITH
MAINTENANCE STRIP

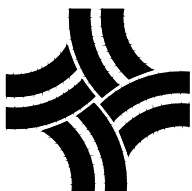
ISSUED:
APRIL 2010
REVISED:
APRIL 2010
DRAWING NO.
800-7



NOTES:

1. DIAMETERS OF BALL VALVES, PVC FITTINGS, AND NIPPLES SHALL EQUAL ELECTRIC CONTROL VALVE DIAMETER
2. VALVE BOXES SHALL BE INSTALLED PARALLEL OR PERPENDICULAR TO ADJACENT SIDEWALKS AND HARD SURFACES WHERE APPLICABLE
3. USE BRAND NAMES SPECIFIED OR APPROVED EQUAL
4. BALL VALVE IN SEPARATE BOX FOR VALVES THAT ARE 3" OR GREATER

N.T.S.

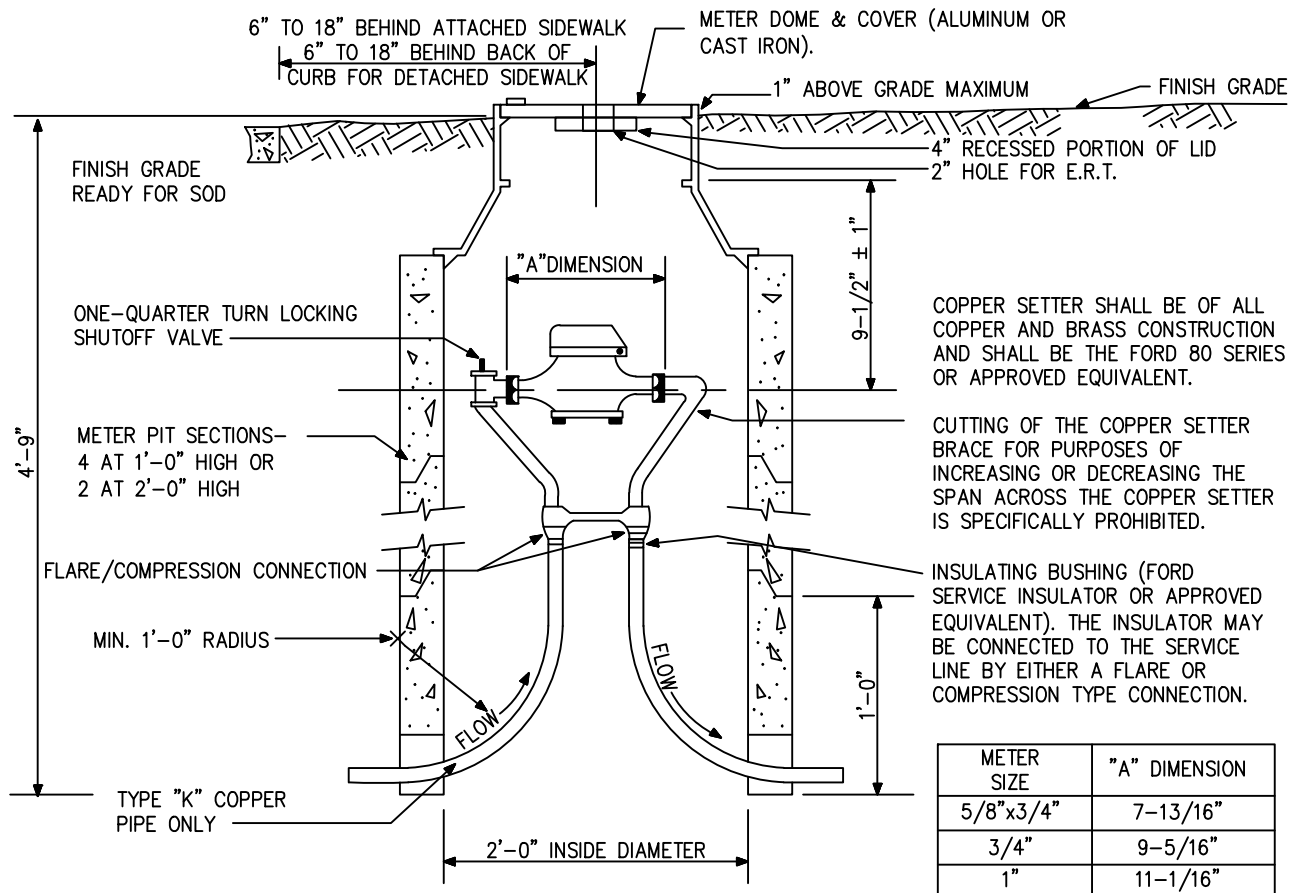


CITY OF THORNTON, COLORADO
STANDARDS & SPECIFICATIONS

AUTOMATIC CONTROL VALVE

ISSUED:
APRIL 2010
REVISED:

DRAWING NO.
800-8



IF SERVICE LINE IS A DIFFERENT SIZE THAN THE METER, THEN THE REDUCTION SHALL OCCUR OUTSIDE THE METER PIT.

WATER METER PITS, COPPER SETTERS, DOMES AND COVERS SHALL BE INSTALLED BY THE RESPONSIBLE PARTY. THE WATER METER SHALL BE INSTALLED BY THE CITY. METER PITS MAY NOT BE INSTALLED IN ANY TYPE OF VEHICULAR OR PEDESTRIAN TRAFFIC ZONE WITHOUT THE APPROVAL OF THE DEVELOPMENT ENGINEERING MANAGER. IN THE EVENT A METER PIT IS INSTALLED WITHIN A VEHICULAR OR PEDESTRIAN TRAFFIC ZONE, A TRAFFIC RATED DOME SHALL BE INSTALLED BY THE RESPONSIBLE PARTY AT THE SOLE EXPENSE OF THE RESPONSIBLE PARTY.

IF INSTALLATION IN A RESIDENTIAL DRIVE IS PERMITTED, THE CONCRETE JOINT PATTERN SHALL CONSIST OF JOINTS ALLOWING THE LEAST AMOUNT OF DAMAGE TO THE SURROUNDING CONCRETE AS POSSIBLE.

METER PITS SHALL BE CONSTRUCTED OF CONCRETE OR PLASTIC. PLASTIC METER PITS SHALL BE MID-STATES PLASTIC, MODEL NO. MS202448B OF DFW PLASTICS, MODEL NO. 2048 B OR EQUAL AS APPROVED BY THE DEVELOPMENT ENGINEERING MANAGER. PLASTIC METER PITS SHALL MEET SAME DIMENSION REQUIREMENTS AS THE CONCRETE PITS. THE INTERIOR OF THE PLASTIC METER PITS SHALL ALSO BE WHITE.

METER PITS GRADE ADJUSTMENT SHALL BE MADE UTILIZING CONCRETE RINGS. THE TRENCH FLOOR UNDER THE CONCRETE RINGS SHALL BE COMPACTED EARTH. COPPER SERVICE PIPE ENTERING AND LEAVING THE PIT BENEATH THE BOTTOM CONCRETE RING SHALL BE OF SUFFICIENT LENGTH SO AS TO MEET THE DEPTH SPECIFICATIONS WHEN THE COPPER SETTER IS INSTALLED. THE PIT SHALL NOT BEAR ON THE SERVICE PIPE. UNDER NO CIRCUMSTANCES SHALL THE SERVICE PIPE ENTER AND EXIT ON THE SAME SIDE OF THE PIT.

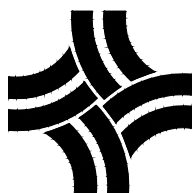
WATER METER PIT INSTALLATIONS SHALL NOT BE GIVEN FINAL INSPECTION OR THE WATER METER INSTALLED UNTIL FINAL GRADING HAS BEEN COMPLETED. AFTER THE CITY HAS MADE THE FINAL INSPECTION, ANY NECESSARY GRADE ADJUSTMENTS TO THE PIT SHALL BE THE RESPONSIBILITY OF THE RESPONSIBLE PARTY.

THE USE OF CONCRETE RISER RINGS FOR THE PURPOSE OF DOME HEIGHT ADJUSTMENT IS PERMITTED PROVIDED SPECIFICATIONS ARE MET AFTER THE INSTALLATION IS COMPLETED (FOR PLASTIC METER PITS RISERS SHOULD BE PER MANUFACTURER'S RECOMMENDATION). THE USE OF BROKEN RINGS OR WOOD SHIMS UNDER THE DOME IS SPECIFICALLY PROHIBITED.

GALVANIZED PIPE AND FITTINGS ARE SPECIFICALLY PROHIBITED. SEE DETAIL 200-15 FOR CORROSION PROTECTION INFORMATION.

WATER SERVICE LOCATIONS SHALL BE MARKED WITH A "V" ON THE CURB. SANITARY SEWER SERVICE LOCATIONS SHALL BE MARKED WITH AN "X" ON THE CURB. MARKINGS SHALL BE NEATLY STAMPED, CHISELED OR SAWCUT, NOT PAINTED.

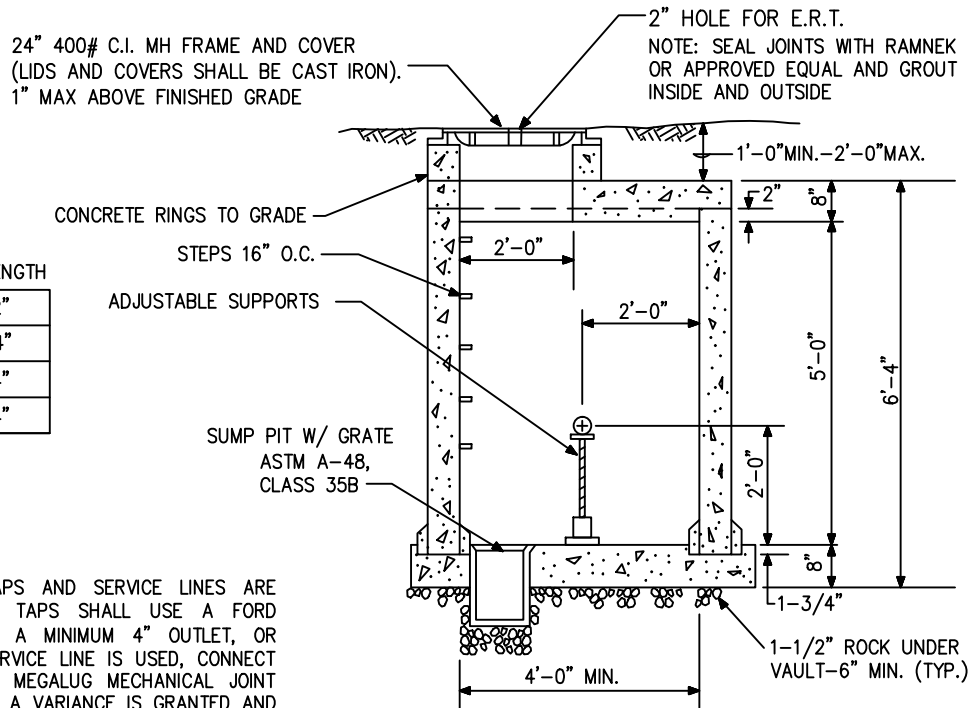
N.T.S.



CITY OF THORNTON, COLORADO
STANDARDS & SPECIFICATIONS
STANDARD IRRIGATION
METER PIT DETAIL 5/8" X 3/4",
3/4" & 1" METERS ONLY

ISSUED:
APRIL 1992
REVISED:
JAN 2012
DRAWING NO.
800-9

SIZE	LAYING LENGTH
1-1/2" COMPOUND	13-1/2"
2" TURBINE	10-3/4"
3" TURBINE	12-1/4"
4" TURBINE	14-1/4"



VAULT PROFILE

ALL IRRIGATION WATER CONNECTION TAPS AND SERVICE LINES ARE REQUIRED TO BE A MINIMUM OF 4". TAPS SHALL USE A FORD STAINLESS STEEL TAPING SLEEVE WITH A MINIMUM 4" OUTLET, OR APPROVED EQUIVALENT. IF C900 PVC SERVICE LINE IS USED, CONNECT IT TO THE TAPPING SLEEVING USING A MEGALUG MECHANICAL JOINT RESTRAINT OR APPROVED EQUIVALENT. IF A VARIANCE IS GRANTED AND A SMALLER TAP AND SERVICE LINE IS APPROVED, THEN REFER TO WATER SERVICE INSTRUCTIONS IN DETAILS #200-14, 17A, & 18B.

CORPORATION STOPS SHALL BE AWWA TAPER THREAD TO COPPER CONNECTION OF PACK JOINT AND SHALL BE A FORD TYPE F600 OR AN APPROVED EQUAL. TAPS SHALL BE MADE BY THE RESPONSIBLE PARTY.

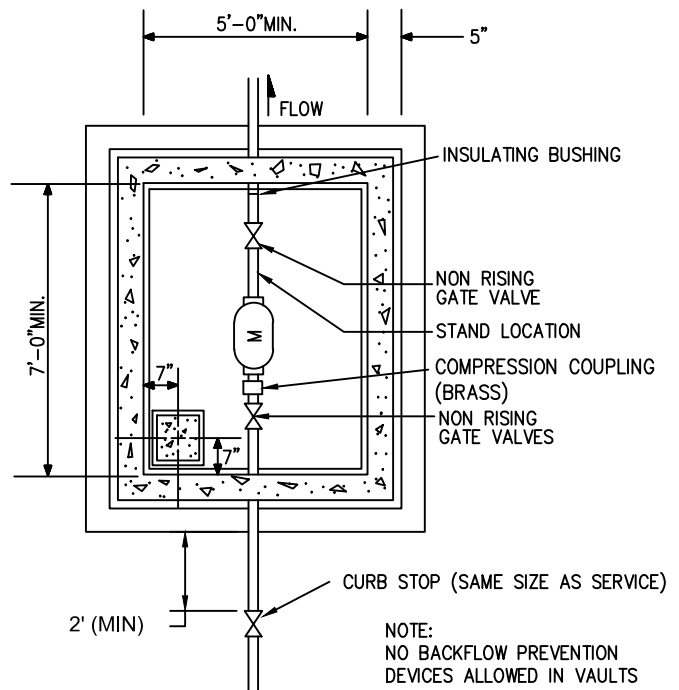
A MINIMUM 4" GATE VALVE CONFORMING TO DETAIL #200-6A/B OF THESE STANDARDS AND SPECIFICATIONS SHALL BE INSTALLED ON EVERY IRRIGATION SERVICE BETWEEN THE WATER MAIN AND THE METER, WHICH IS AT A POINT AT OR NEAR THE PROPERTY LINE. THE VALVE SHALL BE ACCESSIBLE THROUGH A TYLER 6860 3-PIECE VALVE BOX WITH STANDARD OVAL BASE AND A DROP LID.

INSIDE THE METER PIT, PIPE SHALL BE TYPE K CLASS, RIGID COPPER PIPE. THE METER VAULT PIPING SHALL BE OF THE SAME INSIDE DIAMETER AS THE METER ORIFICE. ANY SERVICE PIPE MATERIAL CHANGES SHALL OCCUR OUTSIDE THE METER VAULT.

JOINTS SHALL BE OF A SWEAT COPPER DESIGN. SOLDER USED IN CONNECTION OF THE JOINTS SHALL BE OF A LEAD CONTENT OF 0.20 OR LESS.

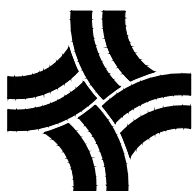
GATE VALVES SHALL BE AWWA APPROVED GATE VALVES OF BRASS CONSTRUCTION. THE VALVES SHALL BE COUNTERCLOCKWISE OPEN. REFER TO SUBSECTION 204.1(D) OF THESE STANDARDS AND SPECIFICATIONS. VALVES LOCATED IN VAULTS SHALL HAVE HANDWHEELS IN LIEU OF A TWO (2) INCH SQUARE OPERATING NUT.

WATER SERVICE LOCATIONS SHALL BE MARKED WITH A "V" ON THE CURB, AND SEWER SERVICE SHALL BE MARKED WITH AN "X". MARKINGS SHALL BE NEATLY STAMPED, CHISELED OR SAWCUT, AND SHALL NOT BE PAINTED.



VAULT PLAN

N.T.S.



CITY OF THORNTON, COLORADO
STANDARDS & SPECIFICATIONS
STANDARD IRRIGATION METER
SETTING VAULT DETAIL FOR
1-1/2", 2", 3" & 4" METERS

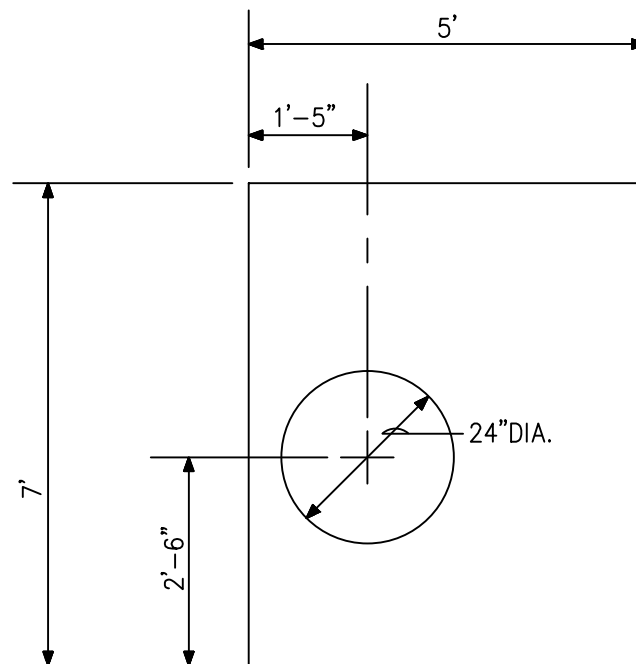
ISSUED:
APRIL 1992
REVISED:
JAN 2012
DRAWING NO.
800-10A

METER VAULT LIDS AND COVER SHALL BE CAST IRON.

PIPE SHALL BE TYPE K CLASS, RIGID COPPER PIPE. THE METER VAULT PIPING SHALL BE OF THE SAME INSIDE DIAMETER AS THE METER ORIFICE. JOINTS SHALL BE OF SWEAT COPPER DESIGN. SOLDER USED IN CONNECTION OF THE JOINTS SHALL BE OF A LEAD CONTENT OF 0.20 OR LESS. THE OUTLET SIDE OF THE COPPER SETTERS SHALL BE ISOLATED FROM THE SERVICE LINE WITH A FORD SERVICE INSULATOR OR APPROVED EQUIVALENT.

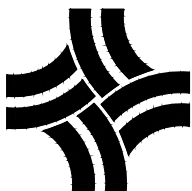
GATE VALVES SHALL BE AWWA APPROVED GATE VALVES OF BRASS CONSTRUCTION. THE VALVE STEMS SHALL BE OF NON-RISING DESIGN. VALVES SHALL BE COUNTERCLOCKWISE OPEN, AND SHALL HAVE HANDWHEELS IN LIEU OF A TWO (2) INCH SQUARE OPERATING NUT. VALVES SHALL BE INSTALLED BOTH UPSTREAM AND DOWNSTREAM OF THE WATER METER WITHIN THE VAULT.

BRASS UNIONS OF A COMPRESSION TYPE SEALING DESIGN SHALL BE INSTALLED BETWEEN THE GATE VALVE AND THE WATER METER, EITHER UPSTREAM OR DOWNSTREAM OF THE METER TO FACILITATE REMOVAL OF THE WATER METER FROM THE SERVICE LINE.



ROOF SLAB

N.T.S.

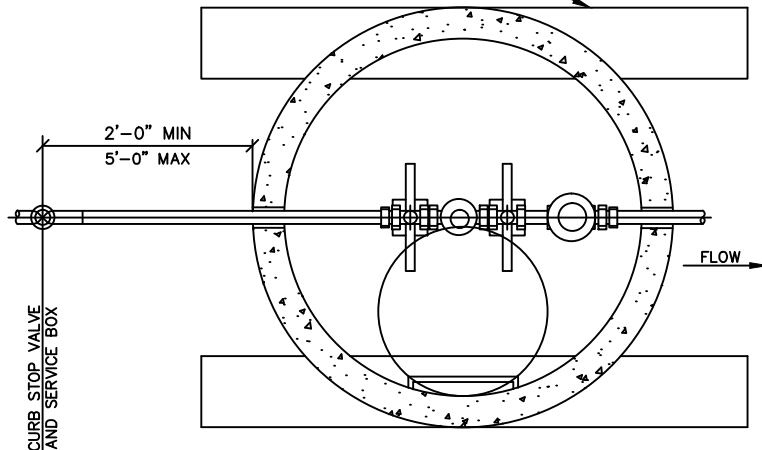


CITY OF THORNTON, COLORADO
STANDARDS & SPECIFICATIONS
STANDARD IRRIGATION METER
ROOF SLAB DETAIL FOR 1-1/2",
2", 3", & 4" METERS

ISSUED:
APRIL 1992
REVISED:
APRIL 2010

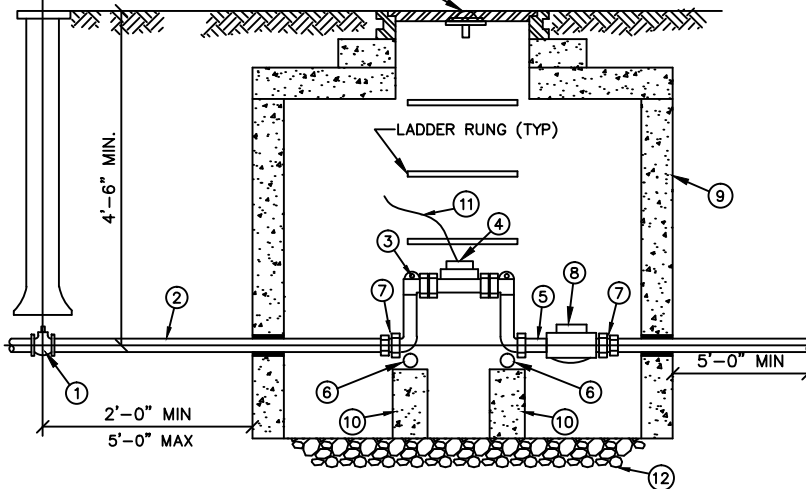
DRAWING NO.
800-10B

CONC MH BASE BEAMS REQD FOR METER IN STREET OR PARKING AREA (SEE DETAIL SHEET 16)



24" MH COVER

PLAN



ELEVATION

NOTES:

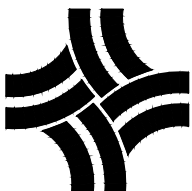
1. METER VAULT SHALL BE INSTALLED IN LANDSCAPED AREA UNLESS APPROVED BY METER INSPECTOR.
2. CURB STOP SHALL BE 24" TO 60" FROM THE INLET SIDE OF THE METER VAULT, IN LANDSCAPED AREA.
3. FOR VAULT INSTALLATIONS IN ROADWAYS AND DRIVEWAYS, WHEN APPROVED, MH BASE BEAMS ARE REQD. METER VAULT MAY NOT BE INSTALLED IN PARKING AREA.
4. NO CONNECTIONS OF ANY TYPE, PIPE BENDS, OR CHANGES IN PIPE SIZE ARE PERMITTED INSIDE THE VAULT.
5. METER SHALL BE FURNISHED WITH ELECTRONIC DIGITAL REGISTER OR ELECTRONIC ENCODED REGISTER AND AN ITRON PIT ERT. IN SPECIAL CIRCUMSTANCES, REMOTE ERT MAY BE REQD (SEE SHEET 50), TO BE INSTALLED ON NEARBY BUILDING OR POST.
6. JOINTS INSIDE METER VAULT SHALL BE THD OR SHALL BE SOLDERED WITH 95-5 TIN/ANTIMONY SOLDER IN ACCORDANCE WITH ASTM B 32.
7. DISTANCE BETWEEN RUNGS, CLEATS AND STEPS SHALL NOT EXCEED 12" AND SHALL BE UNIFORM THROUGHOUT THE LENGTH OF THE LADDER.
8. VAULT WALL PENETRATIONS SHALL BE GROUTED WITH CONC.
9. COPPERSETTER OR METER YOKE SHALL BE NO MORE THAN 12" HIGH.

SIZE	LAYING LENGTH
1 1/2" COMPOUND	13-1/2"
2" TURBINE	10-3/4"

DETAILS:

- | | |
|--|--|
| <p>(1) CURB STOP</p> <p>(2) TYPE K COPPER TUBING</p> <p>(3) 12" COPPERSETTER / METER YOKE WITH BYPASS</p> <p>(4) METER UNIT</p> <p>(5) 3" NIPPLE BETWEEN COPPERSETTER AND CHECK VALVE</p> <p>(6) 1" x 23" PIPE</p> <p>(7) IRON PIPE TO FLARE COUPLING FROM INLET SIDE OF COPPERSETTER AND OUTLET SIDE OF CHECK VALVE</p> | <p>(8) CHECK VALVE (CHECK VALVES ARE NOT REQUIRED WHERE A BACKFLOW PREVENTION DEVICE IS INSTALLED)</p> <p>(9) 48" CONC MH WITH FLAT LID</p> <p>(10) CONC BLOCK SUPPORTS 4" x 4" x 24"</p> <p>(11) SIGNAL WIRE TO ITRON ERT</p> <p>(12) 1 1/2" FRACTURED ROCK BEDDING OR CONCRETE FLOOR WITH DRAIN HOLE</p> |
|--|--|

N.T.S.



CITY OF THORNTON, COLORADO
STANDARDS & SPECIFICATIONS

1.5IN & 2IN IRRIGATION METER
SETTING VAULT DETAIL

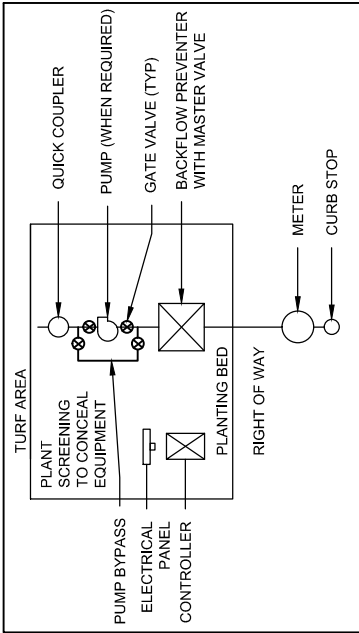
ISSUED:
MARCH 1996

REVISED:
APRIL 2010

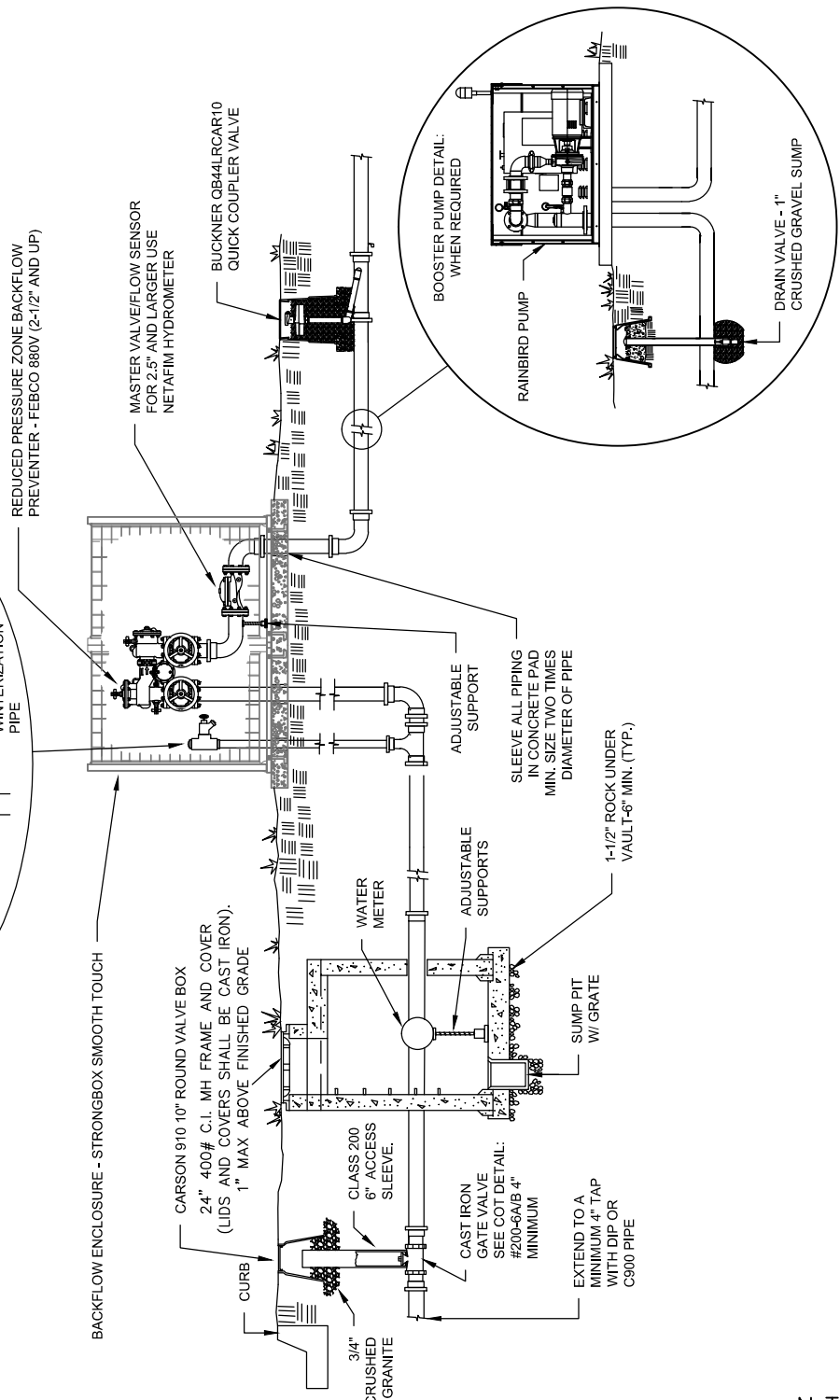
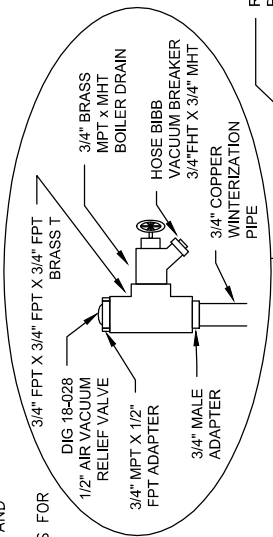
DRAWING NO.
800-10C



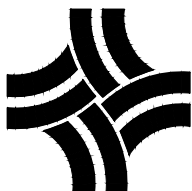
DRAWING NO.
800-11A



NOTE:
CONCRETE PAD PENETRATIONS TO BE 1" LARGER THAN SLEEVE DIAMETER.
REFER TO ENCLOSURE INSTRUCTIONS FOR CONCRETE PAD DIMENSIONS.
ALL VALVES AND FITTINGS INCLUDING RPZ SHALL MATCH SIZE OF THE SERVICE LINE FROM METER. SEE TABLE 800 - 1 & 2 IN THESE STANDARDS AND SPECIFICATIONS FOR MORE INFORMATION.
SEE DETAIL 800-10A & 10B FOR SPECIFIC VAULT AND METER SETTING REQUIREMENTS.
SEE SECTION 800 OF THE WRITTEN SPECIFICATIONS FOR ADDITIONAL REQUIREMENTS OF COMPONENTS.
EXTEND CRUSHED GRAVEL SUMP 6" BEYOND THE PERIMETER OF EACH ACCESS BOX FOR SUPPORT AND DRAINAGE.



N.T.S.



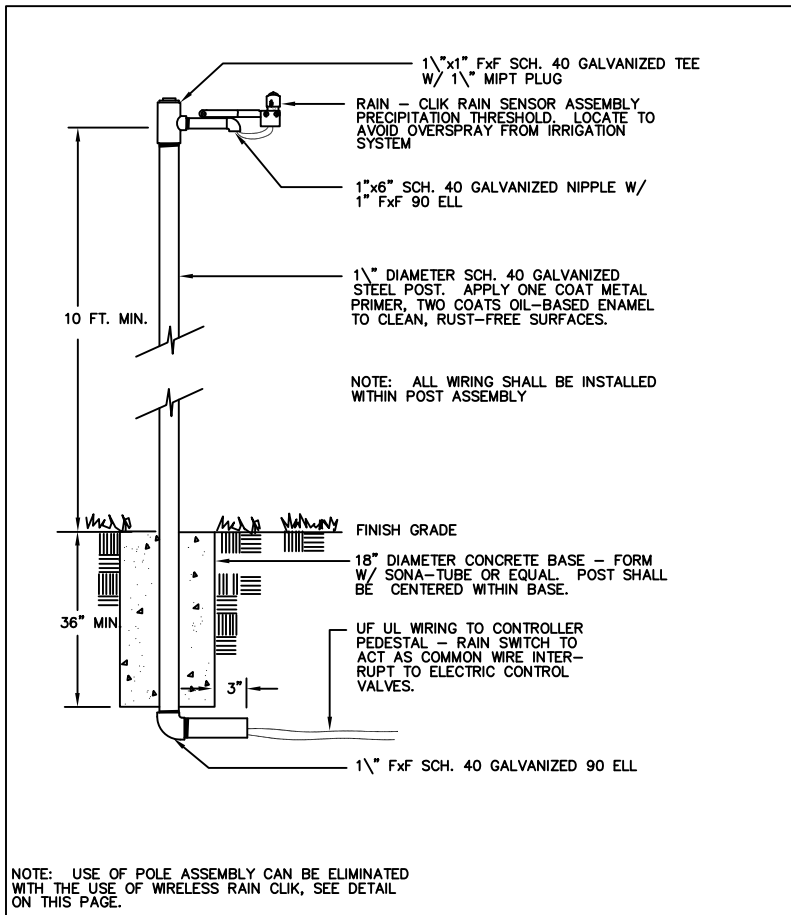
CITY OF THORNTON, COLORADO STANDARDS & SPECIFICATIONS

1.5" & LARGER IRRIGATION METER POINT OF CONNECTION DETAIL

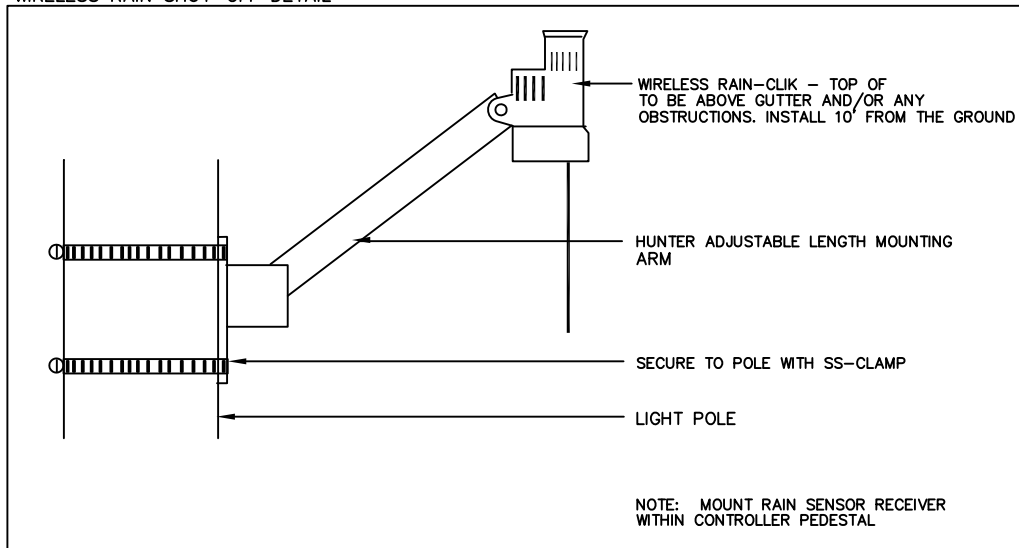
ISSUED:
APRIL 2010
REVISED:

DRAWING NO.
800-11B

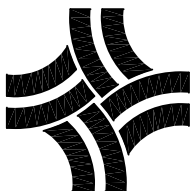
RAIN SHUT-OFF DETAIL WITH POLE ASSEMBLY



WIRELESS RAIN SHUT-OFF DETAIL



N.T.S.

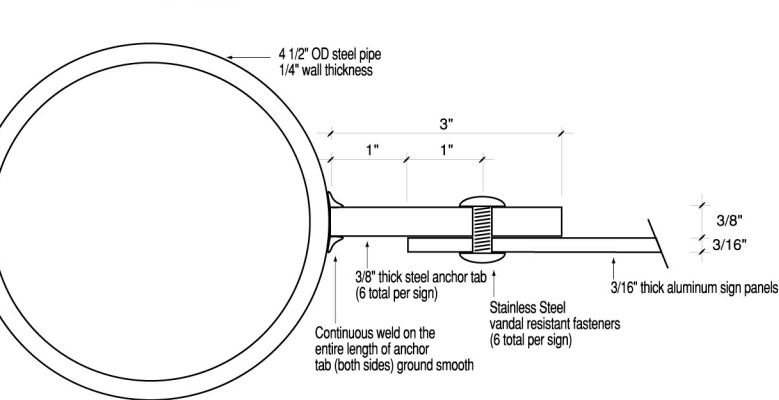


CITY OF THORNTON, COLORADO
STANDARDS & SPECIFICATIONS

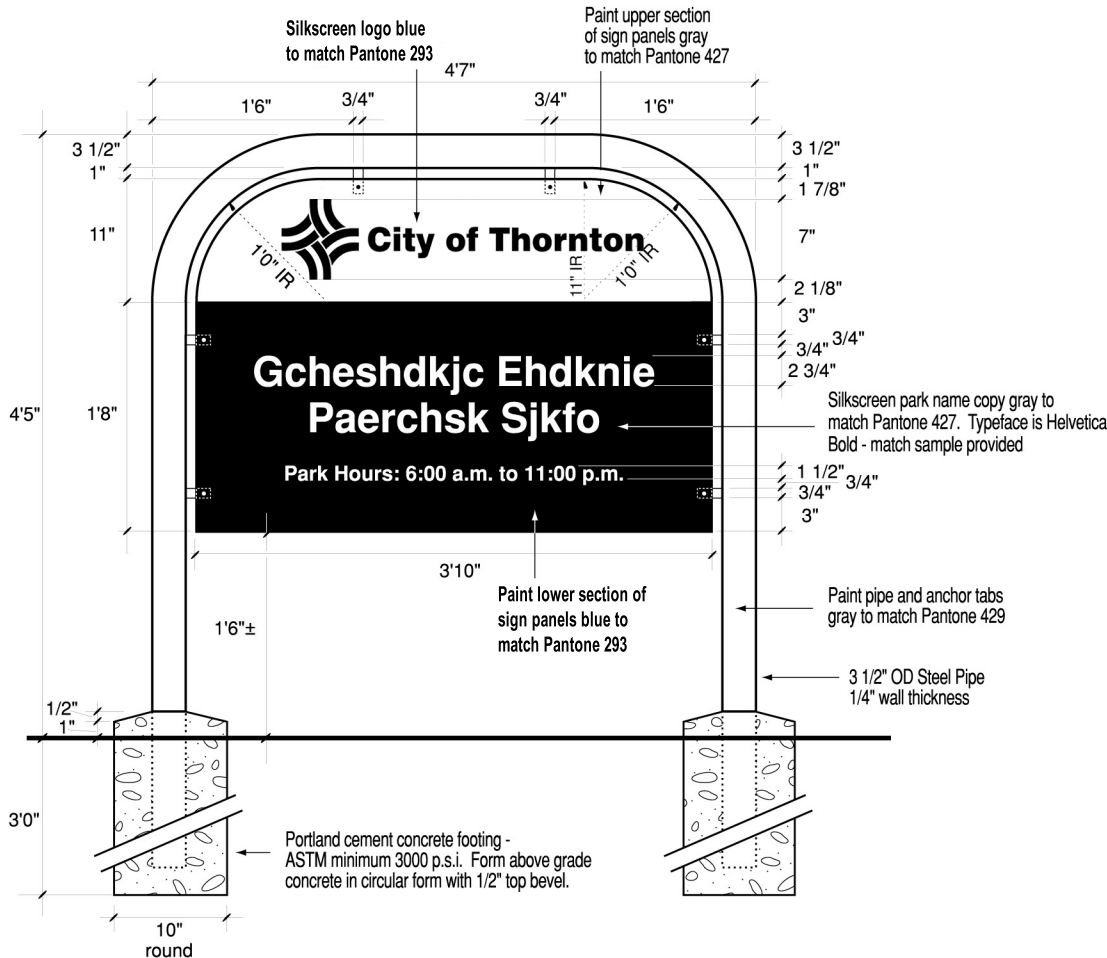
RAIN SHUT-OFF SWITCH DETAIL

ISSUED:
APRIL 2010
REVISED:

DRAWING NO.
800-12

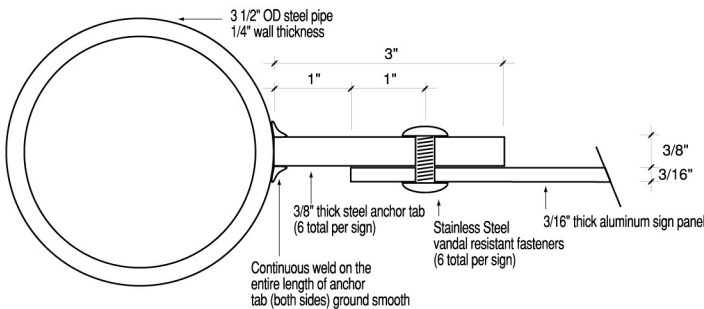


DOUBLEFACED SIGN



PAINT SPECIFICATIONS

- Primers:**
- Aluminum:** Pre-treatment coating consisting of Polyvinyl Butyrate Resin and Zinc Chromate Corrosion Inhibiting Pigments, to be activated with an Acid Etch Compound. Applied directly to metal surfaces to provide corrosion resistance and adhesion.
 - Steel:** Two part Lead/Chromate free Corrosion Inhibiting Epoxy/Polymide Primer.
 - Paint:** All paint to be specified should be an Ultraviolet Inhibited Aliphatic Isocyanate/Acrylic Polyol system engineered for extreme color and gloss retention. Follow manufacturers instructions for paint thickness.



ATTACHMENT DETAIL

N.T.S.



CITY OF THORNTON, COLORADO
STANDARDS & SPECIFICATIONS

PARK SIGN B

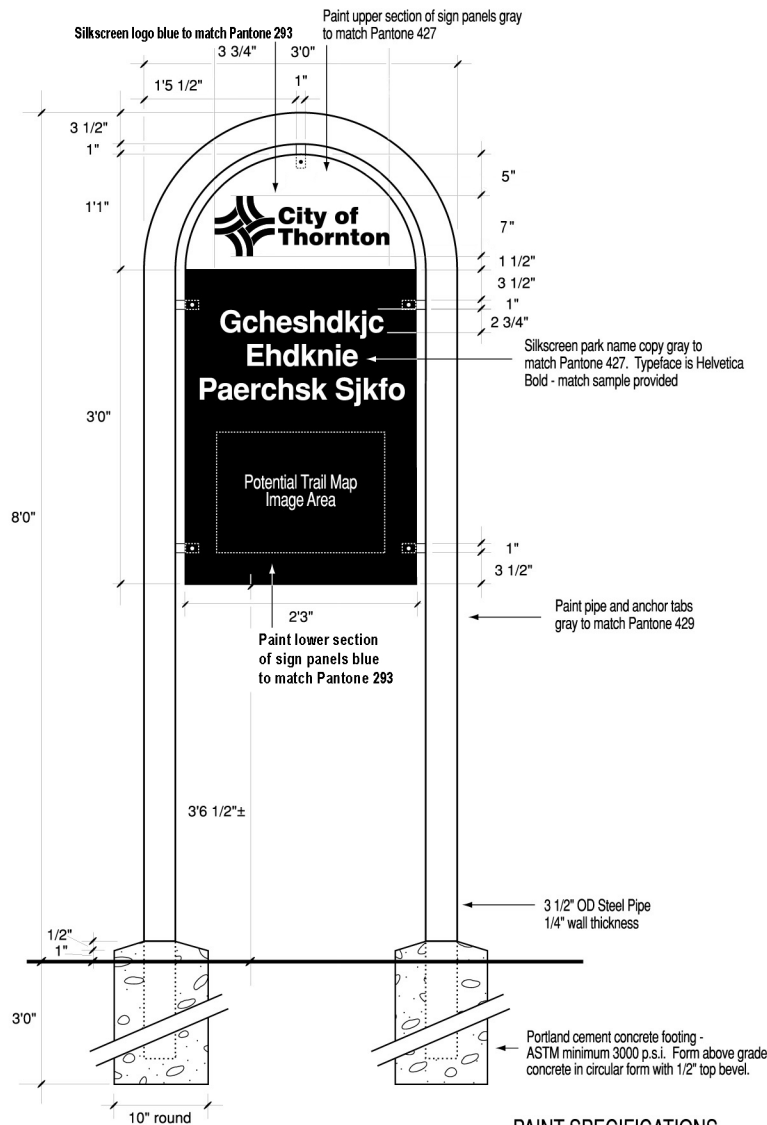
ISSUED:

REVISED:

DRAWING NO.

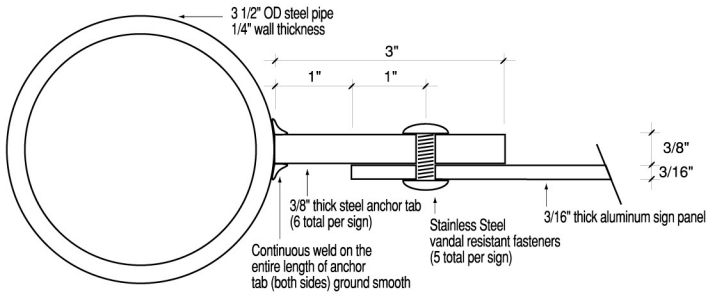
800-14

DOUBLEFACED SIGN



PAINT SPECIFICATIONS

Primers:
Aluminum: Pre-treatment coating consisting of Polyvinyl Butyrate Resin and Zinc Chromate Corrosion Inhibiting Pigments, to be activated with an Acid Etch Compound. Applied directly to metal surfaces to provide corrosion resistance and adhesion.
Steel: Two part Lead/Chromate free Corrosion Inhibiting Epoxy/Polymide Primer.
Paint:
All paint to be specified should be an Ultraviolet Inhibited Aliphatic Isocyanate/Acrylic Polyol system engineered for extreme color and gloss retention. Follow manufacturers instructions for paint thickness.



ATTACHMENT DETAIL

N.T.S.



CITY OF THORNTON, COLORADO
STANDARDS & SPECIFICATIONS

TRAIL SIGN

ISSUED:
REVISED:
DRAWING NO.
800-15