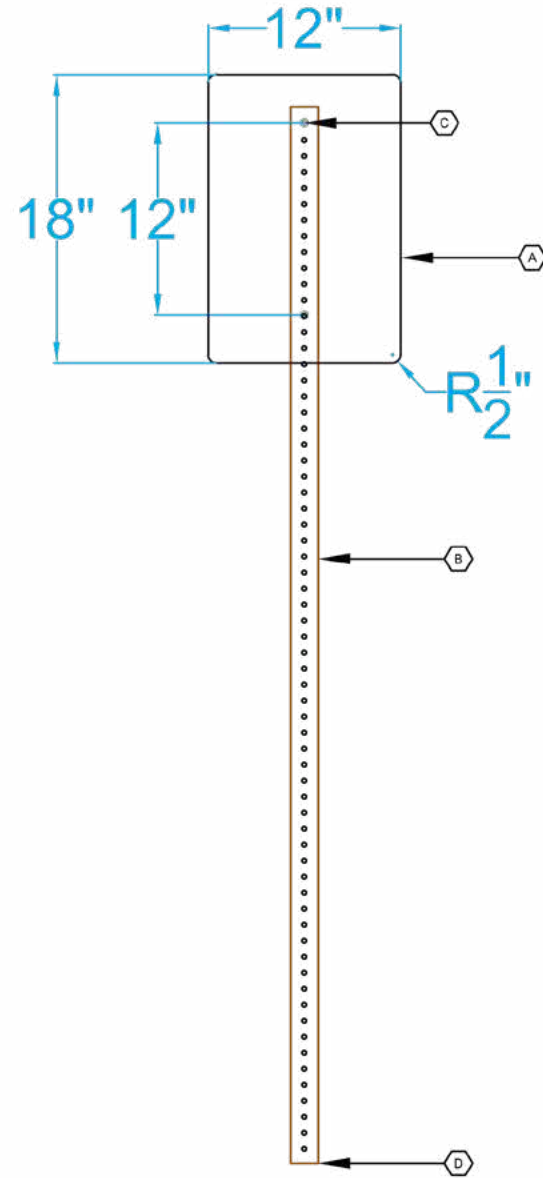
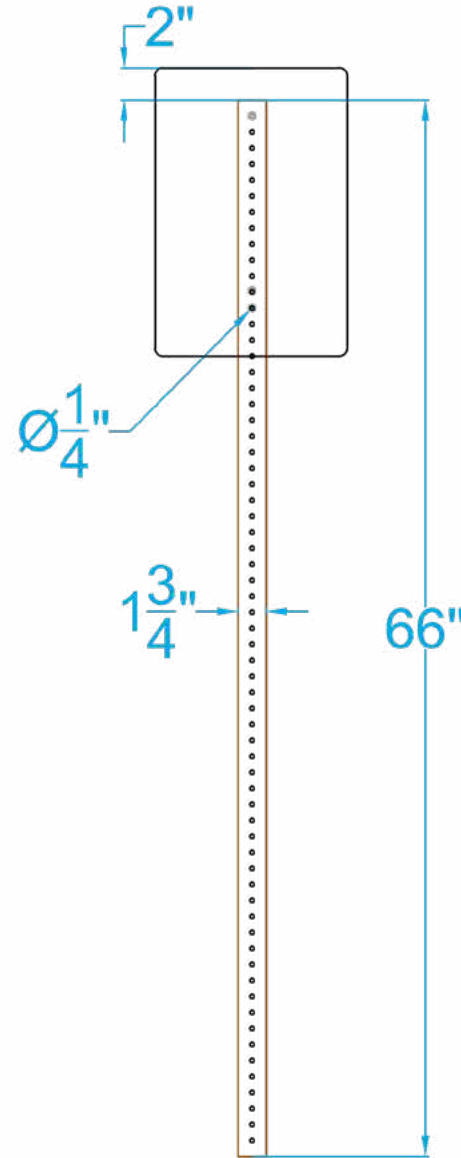


1 3D view
NTS



2 Front view
Scale 1"=1'-0"



3 Rear view
Scale 1"=1'-0"

KEY NOTES

A. SIGN PANEL

SIZE: 12" x 18"

MATERIAL: The sign panel shall be aluminum in make with rounded edges. Panel need not be reflective.
GRAPHICS/TEXT: All graphics and text to be digitally printed and imbedded into panel.

B. POST

SIZE: 1 3/4" x 1 3/4" U.S.S. 12 gauge perforated square tube.
MATERIAL: galvanized steel

C. MOUNTING HARDWARE

Top fastener shall be a bolt and washer inserted from the front of the sign panel and secured by a washer and nut at the back of the post. Bottom fastener shall be a drive rivet inserted from the front of the panel.
MATERIAL: stainless steel.
FASTENER: bolt, washer, nut, drive rivet.

D. SIGN POST ANCHOR

Sign will be anchored using a 1 1/2" V Loc Breakaway System.

GENERAL NOTES

- These drawings are intended to illustrate design intent only and are not for construction. All final engineering and conditions of the project are the responsibility of the fabricator. Shop drawings by the fabricator must be submitted for approval, prior to proceeding with fabrication.
- The quality of fit and finish on the final product must meet or exceed the requirements of these design intent documents. Any variations to design, materials, or fabrication methods must be approved by the Owner or Representative.
- Colors shown are for reference only and are subject to the limitations of the printing process. Refer to referenced color systems contained within these drawings for actual specifications.
- Scaled examples shown are for reference only, and do not necessarily reflect actual site conditions. Detailed site surveys are required prior to fabrication and installation.
- Messages shown in these drawings are for general reference only. Refer to message schedules for actual required messages.
- All sign blades to be located a minimum of 2' from back of curb and edge of path.
- Artwork for signage may be found at: <https://www.thorntonco.gov/government/infrastructure/stormwater/Pages/post-construction.aspx#educational>
- Criteria for sign selection:
 - Low viewership sign will be used for features in less prominent or publicly accessible locations.
 - High viewership sign will be used for features in more public locations such as parks or along trails.
 - Stormwater Feature Educational Signage may be determined to be infeasible for a particular project. Final determination to be made by either the Stormwater Compliance Inspector or Project Manager and will be noted during review.

← (X) Refer to key note

Stormwater Treatment Feature Information Signage

Low viewership sign: Sheet 1/1

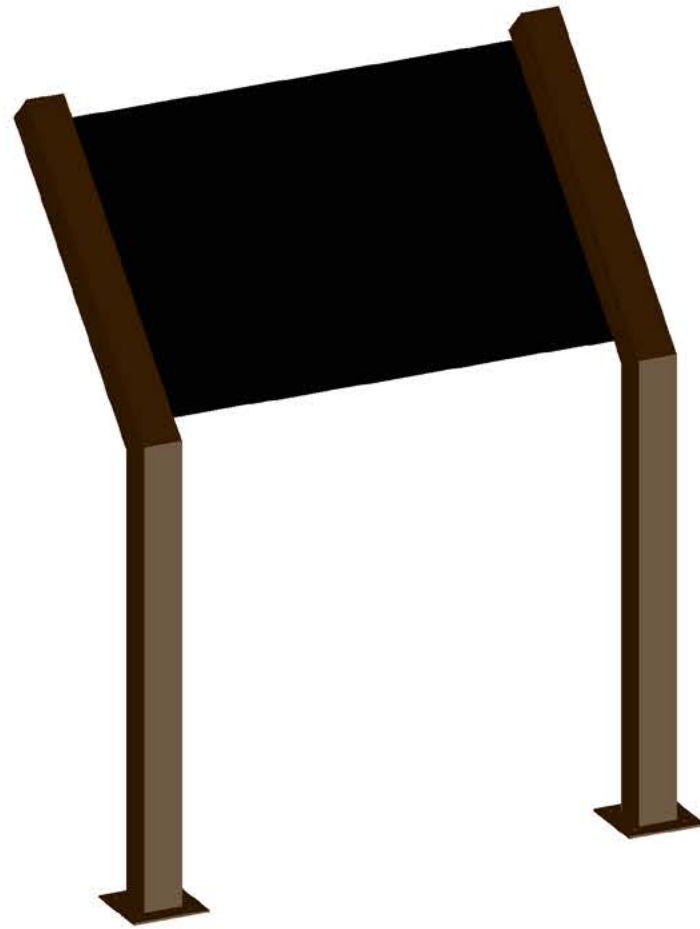
Last updated 23 October 2023

Primary contact: Kurtis Vanatta 720-977-6255

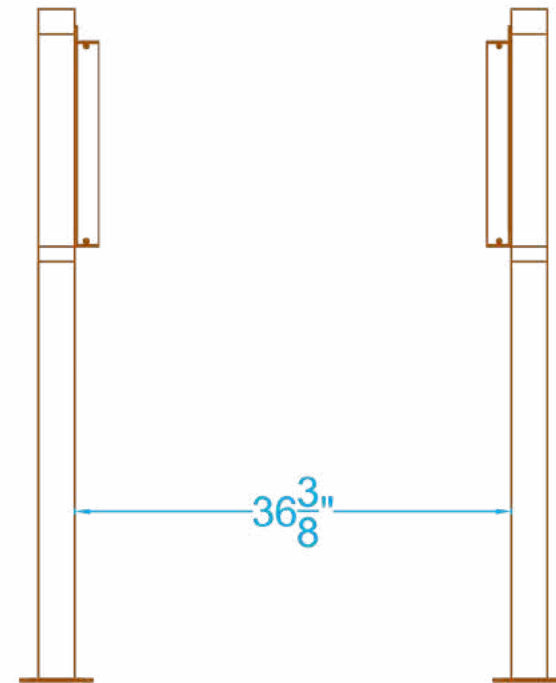
Secondary contact: Keith Bisbe 720-977-6256

Drawn by: Nate Jett 720-977-6257

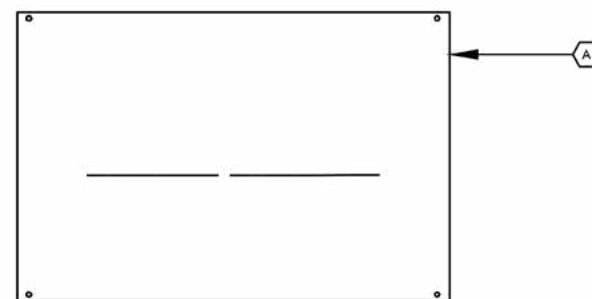




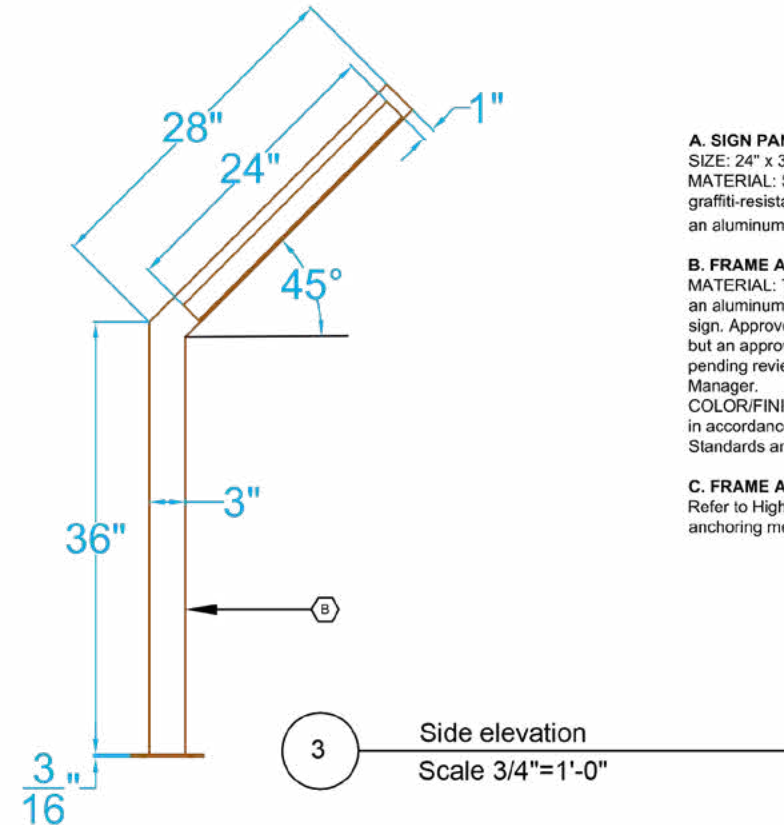
1 3D view
NTS



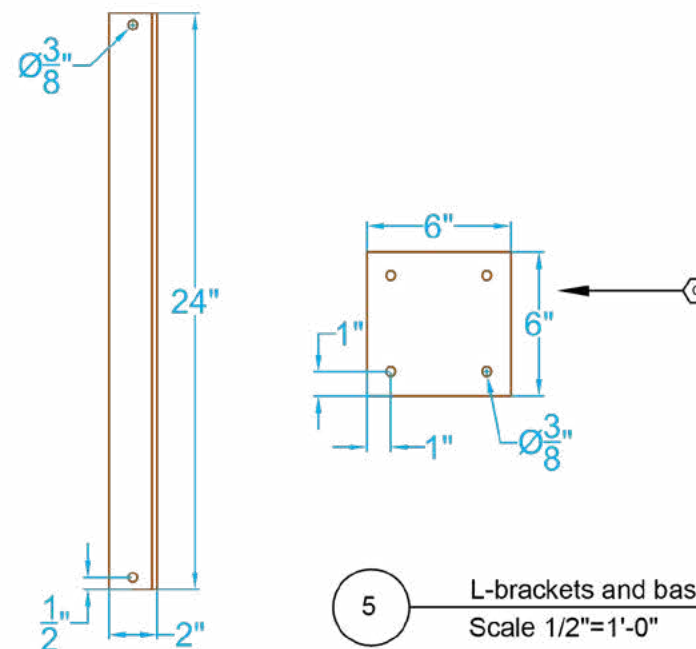
2 Front elevation
Scale 3/4"=1'-0"



4 Sign panel front
Scale 3/4"=1'-0"



3 Side elevation
Scale 3/4"=1'-0"



5 L-brackets and base plate
Scale 1/2"=1'-0"

KEY NOTES

- A. SIGN PANEL**
SIZE: 24" x 36"
MATERIAL: Sign panel will consist of graffiti-resistant high pressure laminate with an aluminum backing. Thickness 1/2".
- B. FRAME AND MOUNTING HARDWARE**
MATERIAL: The frame and mount shall be an aluminum bracketed cantilever pedestal sign. Approved supplier is *iZone Imaging*, but an approved equal may be allowed pending review from the City Project Manager.
COLOR/FINISH: Mocha brown powder coat in accordance with City of Thornton Standards and Specifications Detail 700-11
- C. FRAME ANCHOR**
Refer to High viewership sign: Sheet 2/2 for anchoring method.

GENERAL NOTES

- These drawings are intended to illustrate design intent only and are not for construction. All final engineering and conditions of the project are the responsibility of the fabricator. Shop drawings by the fabricator must be submitted for approval, prior to proceeding with fabrication.
- The quality of fit and finish on the final product must meet or exceed the requirements of these design intent documents. Any variations to design, materials, or fabrication methods must be approved by the Owner or Representative.
- Welds: All welds shall be ground smooth, paint all seams.
- Colors shown are for reference only and are subject to the limitations of the printing process. Refer to referenced color systems contained within these drawings for actual specifications.
- Scaled examples shown are for reference only, and do not necessarily reflect actual site conditions. Detailed site surveys are required prior to fabrication and installation.
- Messages shown in these drawings are for general reference only. Refer to message schedules for actual required messages.
- All sign blades to be located a minimum of 2' from back of curb and edge of path.
- Artwork for signage may be found at: <https://www.thorntonco.gov/government/infrastructure/stormwater/Pages/post-construction.aspx#educational>
- Sign post may be manufactured in place per the detail or purchased as a product kit.
- Criteria for sign Detail selection:
 - Low viewership sign will be used for features in less prominent or publicly accessible locations.
 - High viewership sign will be used for features in more public locations such as parks or along trails.
 - Stormwater Feature Educational Signage may be determined to be infeasible for a particular project. Final determination to be made by either the Stormwater Compliance Inspector or Project Manager and will be noted during review.

← (X) Refer to key note

Stormwater Treatment Feature Information Signage

High viewership sign: Sheet 1/2

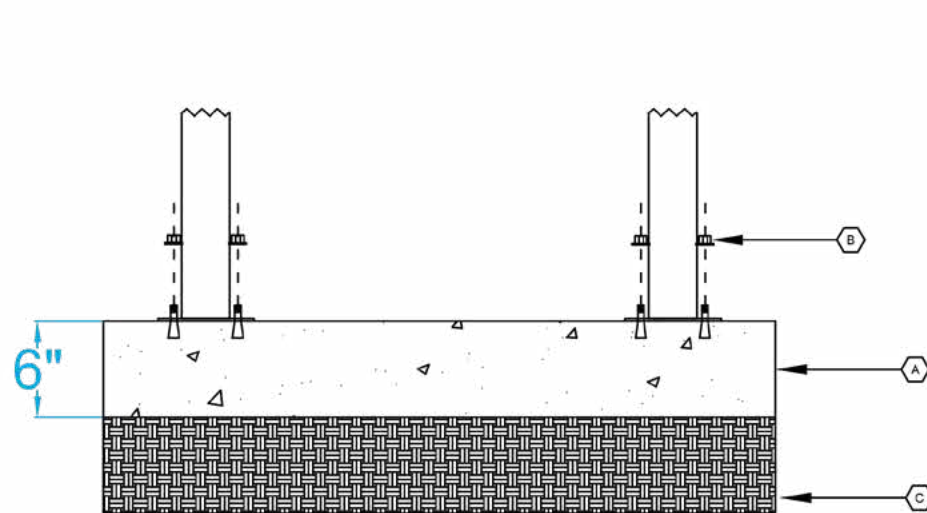
Last updated 20 October 2023

Primary contact: Kurtis Vanatta 720-977-6255

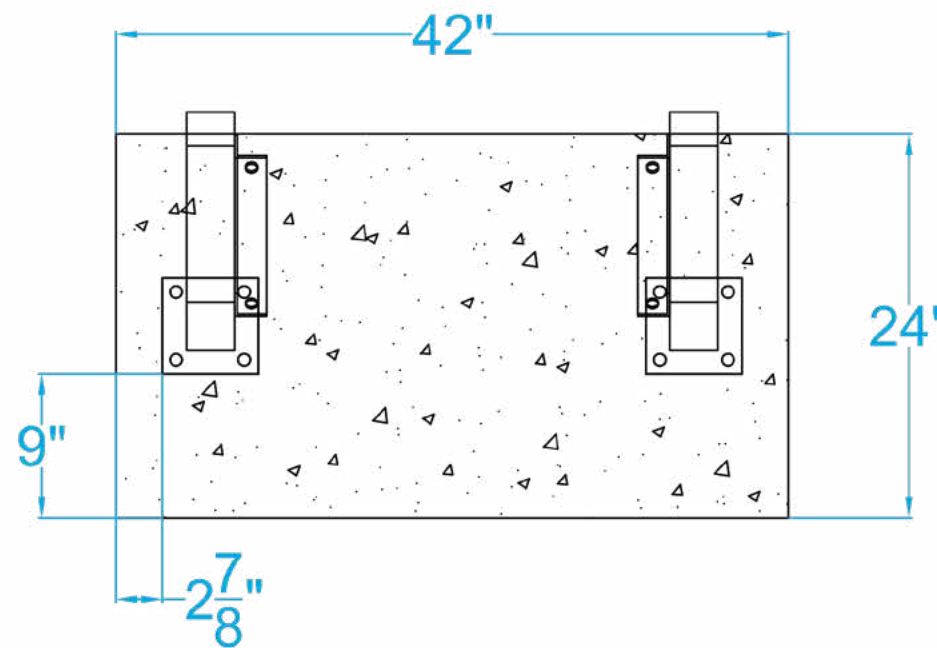
Secondary contact: Keith Bisbe 720-977-6256

Drawn by: Nate Jett 720-977-6257





1 Footing elevation
Scale 1"=1'-0"



2 Footing top
Scale 1"=1'-0"

KEY NOTES

A. CONCRETE BASE

MATERIAL: Concrete base to be installed 6" thick and made of 4500 psi fiber-reinforced concrete placed on existing compacted subgrade.

B. MOUNTING HARDWARE

MATERIAL: Sign to be mounted to concrete using 3/8" steel wedge anchors. Anchors shall be hammered into place, the sign placed over anchors, and secured in place using a stainless steel washer and nut.

C. SUBGRADE

Existing subgrade shall be compacted before pouring of concrete.

GENERAL NOTES

- These drawings are intended to illustrate design intent only and are not for construction. All final engineering and conditions of the project are the responsibility of the fabricator. Shop drawings by the fabricator must be submitted for approval, prior to proceeding with fabrication.
- The quality of fit and finish on the final product must meet or exceed the requirements of these design intent documents. Any variations to design, materials, or fabrication methods must be approved by the Owner or Representative.
- Welds: All welds shall be ground smooth, paint all seams.
- Colors shown are for reference only and are subject to the limitations of the printing process. Refer to referenced color systems contained within these drawings for actual specifications.
- Scaled examples shown are for reference only, and do not necessarily reflect actual site conditions. Detailed site surveys are required prior to fabrication and installation.
- Messages shown in these drawings are for general reference only. Refer to message schedules for actual required messages.
- All sign blades to be located a minimum of 2' from back of curb and edge of path.
- Artwork for signage may be found at: <https://www.thorntonco.gov/government/infrastructure/stormwater/Pages/post-construction.aspx#educational>
- Sign post may be manufactured in place per the detail or purchased as a product kit. Criteria for sign Detail selection:
 - Low viewership sign will be used for features in less prominent or publicly accessible locations.
 - High viewership sign will be used for features in more public locations such as parks or along trails.
 - Stormwater Feature Educational Signage may be determined to be infeasible for a particular project. Final determination to be made by either the Stormwater Compliance Inspector or Project Manager and will be noted during review.

← (X) Refer to key note

Stormwater Treatment Feature Information Signage

High viewership sign: Sheet 2/2

Last updated 18 October 2023

Primary contact: Kurtis Vanatta 720-977-6255

Secondary contact: Keith Bisbe 720-977-6256

Drawn by: Nate Jett 720-977-6257

