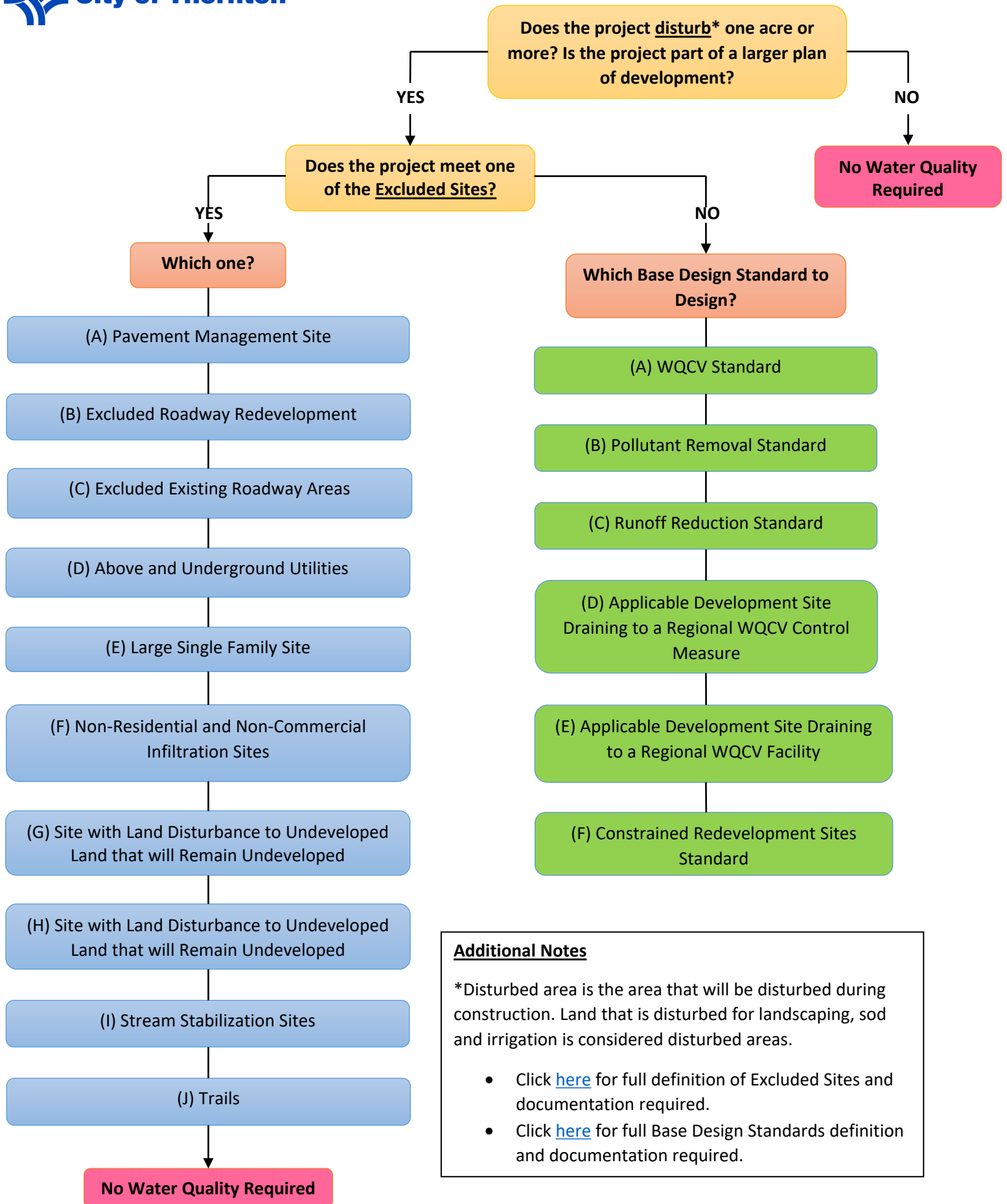


MS4 Post Construction Water Quality Process Flow Chart



Additional Notes

*Disturbed area is the area that will be disturbed during construction. Land that is disturbed for landscaping, sod and irrigation is considered disturbed areas.

- Click [here](#) for full definition of Excluded Sites and documentation required.
- Click [here](#) for full Base Design Standards definition and documentation required.