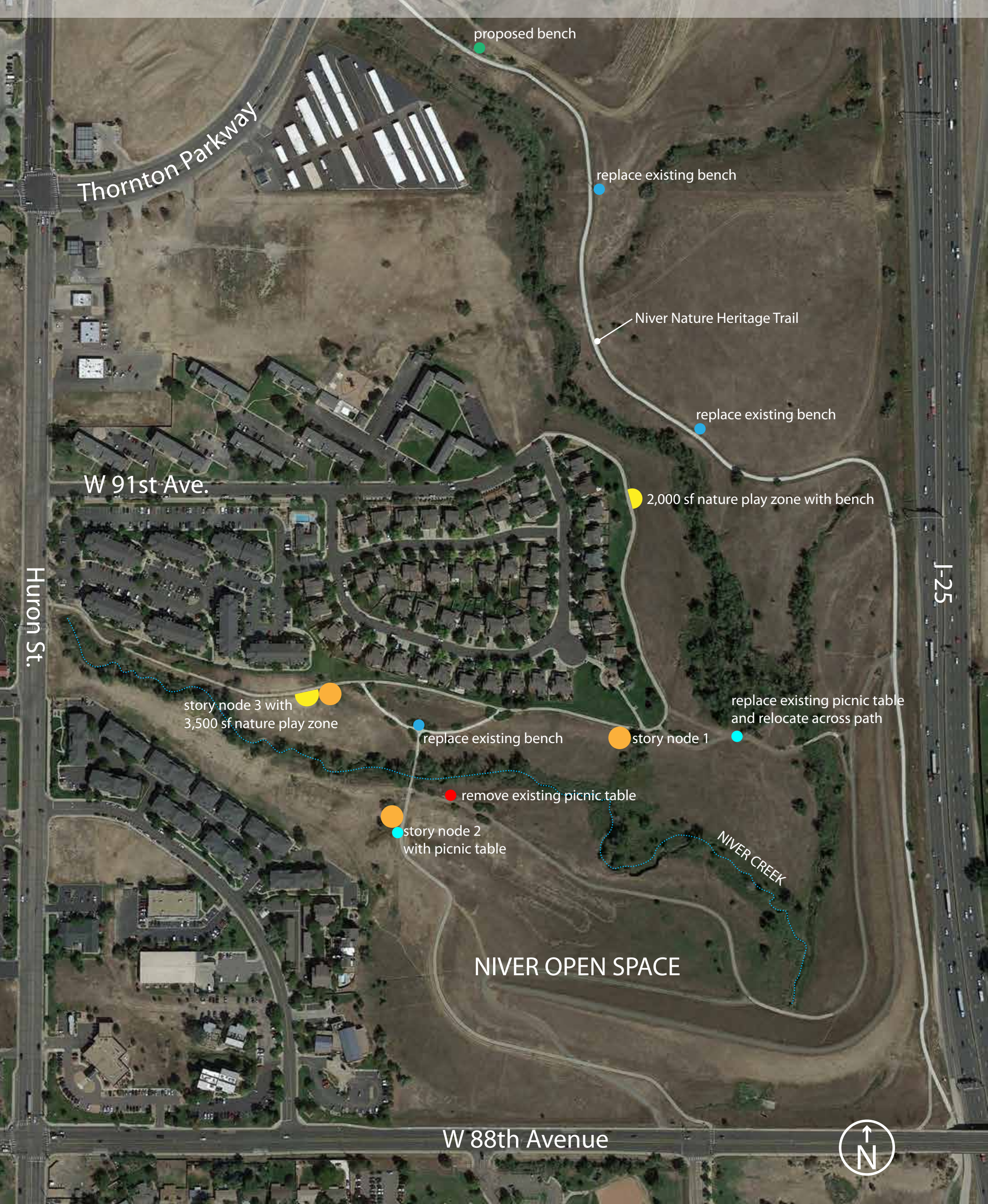


NIVER NATURE HERITAGE TRAIL IMPROVEMENTS



Based on community feedback, the plan presented June 1 has been modified. The nature play area has been divided into two parts, so that it is more spread out within Niver Open Space. The shade shelter and butterfly sculpture have been removed from the plan. An additional bench, and 3 bench replacements are proposed. Both existing picnic tables will be replaced and located to more visible areas. We are moving forward with construction documents based on these plan revisions. Thank you for your input!

